

ข้อมูลการศึกษาลักษณะการใช้ไฟฟ้า

เดือน กรกฎาคม 2552

Table 1-1

COINCIDENT WITH LOAD RESEARCH SYSTEM'S PEAK ON July 28,2009 time 11:30 7,116.17 MW
 (MEA SYSTEM'S PEAK ON July 28,2009 time 14:30 6,934.24 MW)

CLASS	Number of Customers	Kilowatt hours	Coincident Peak (MEA System Peak at time 14:30)		Coincident Peak (Load Research System Peak at time 11:30)		Sector Diversified Demand		
			MW	Contribution (%)	MW	Contribution (%)	Max MW.	Date	Time
Residential	2,348,467	834,352,566	873.26	12.76	1,105.68	15.54	2,121.10	12 Jul 09	22:30
Small General Service	475,306	541,432,382	1,177.84	17.21	1,207.73	16.97	1,286.76	29 Jul 09	14:30
Medium General Service	19,641	674,880,035	1,565.40	22.88	1,549.35	21.77	1,813.07	3 Jul 09	13:45
Large General Service	1,676	1,273,296,438	2,373.48	34.69	2,374.91	33.37	2,490.45	28 Jul 09	14:00
Specific Business	2,417	153,583,175	225.09	3.29	234.12	3.29	271.67	28 Jul 09	21:15
Government and non Profit organization	11,216	115,764,498	403.22	5.89	425.09	5.97	598.12	13 Jul 09	9:30
Public Lighting	4,176	23,206,048	0.00	0.00	0.00	0.00	61.20	-	-
Loss	-	123,234,802	224.18	3.28	219.30	3.08	224.18	28 Jul 09	14:30
TOTAL	2,862,899	3,739,749,944	6,842.48	100	7,116.17	100	7,116.17	28 Jul 09	11:30

Table 1-2

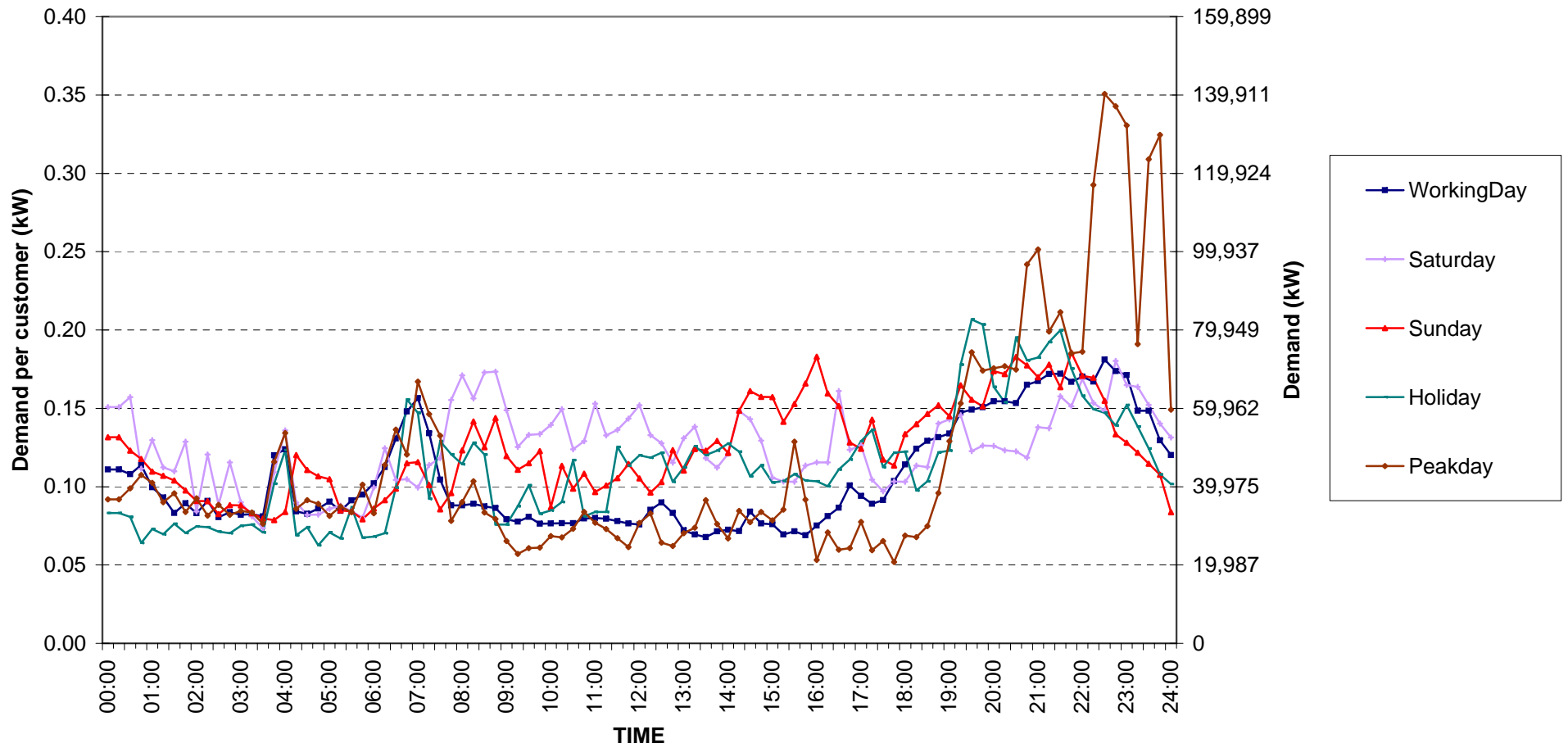
Number of sample customers on July, 2009

CLASS	Number of sample customers (Target)	Number of sample customers (Collected)
Residential	154	154
Small General Service	205	205
Medium General Service	135	135
Large General Service	284	284
Specific Business	74	74
Government and Non-profit Organization	50	50
TOTAL	902	902

Residential (Energy Consumption less than 150 kWh per month)

Date: 1 Jul, 2009 to 31 Jul, 2009

Number of sample customers = 52

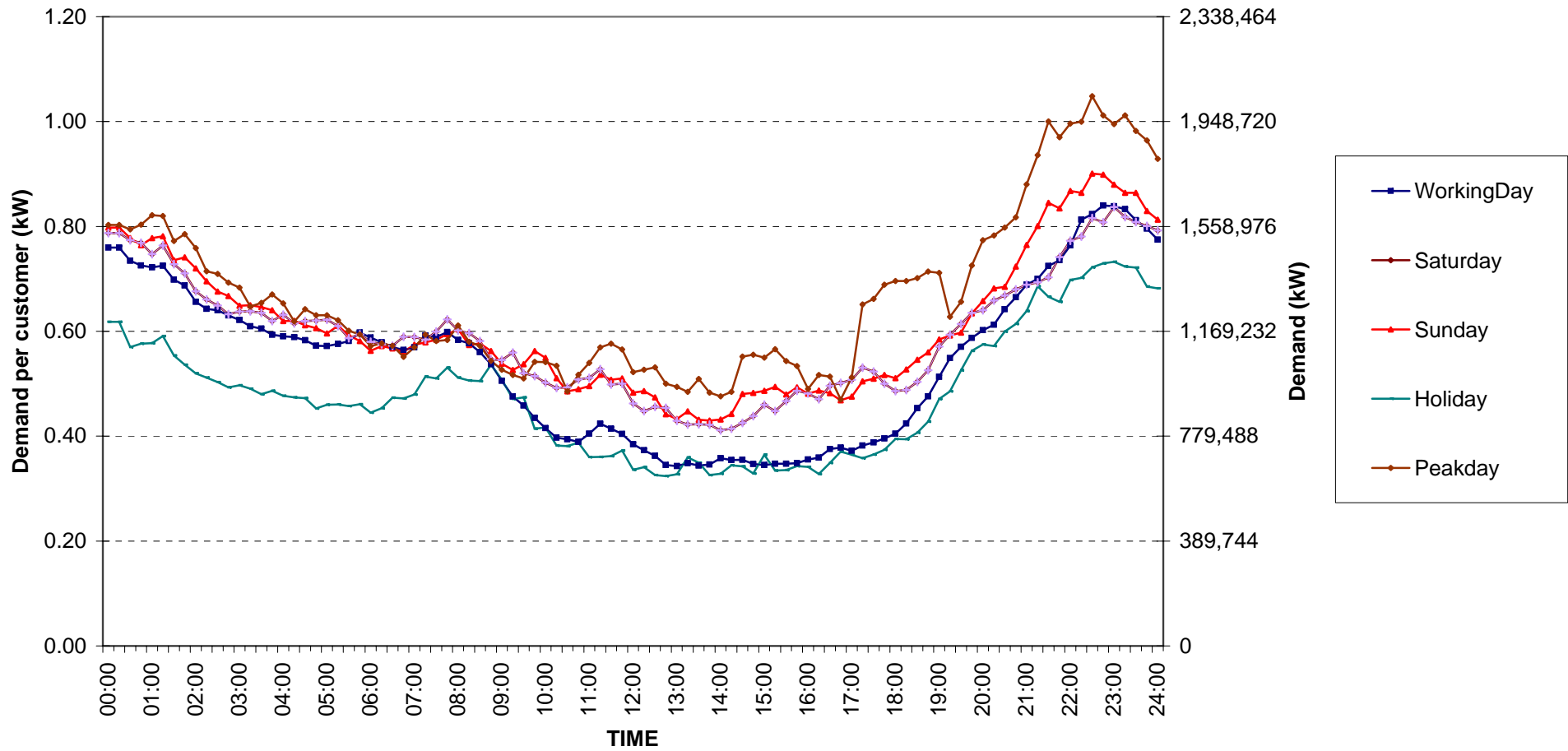


กราฟรูปที่ 1

Residential (Energy Consumption more than 150 kWh per month)

Date: 1 Jul, 2009 to 31 Jul, 2009

Number of sample customers = 102

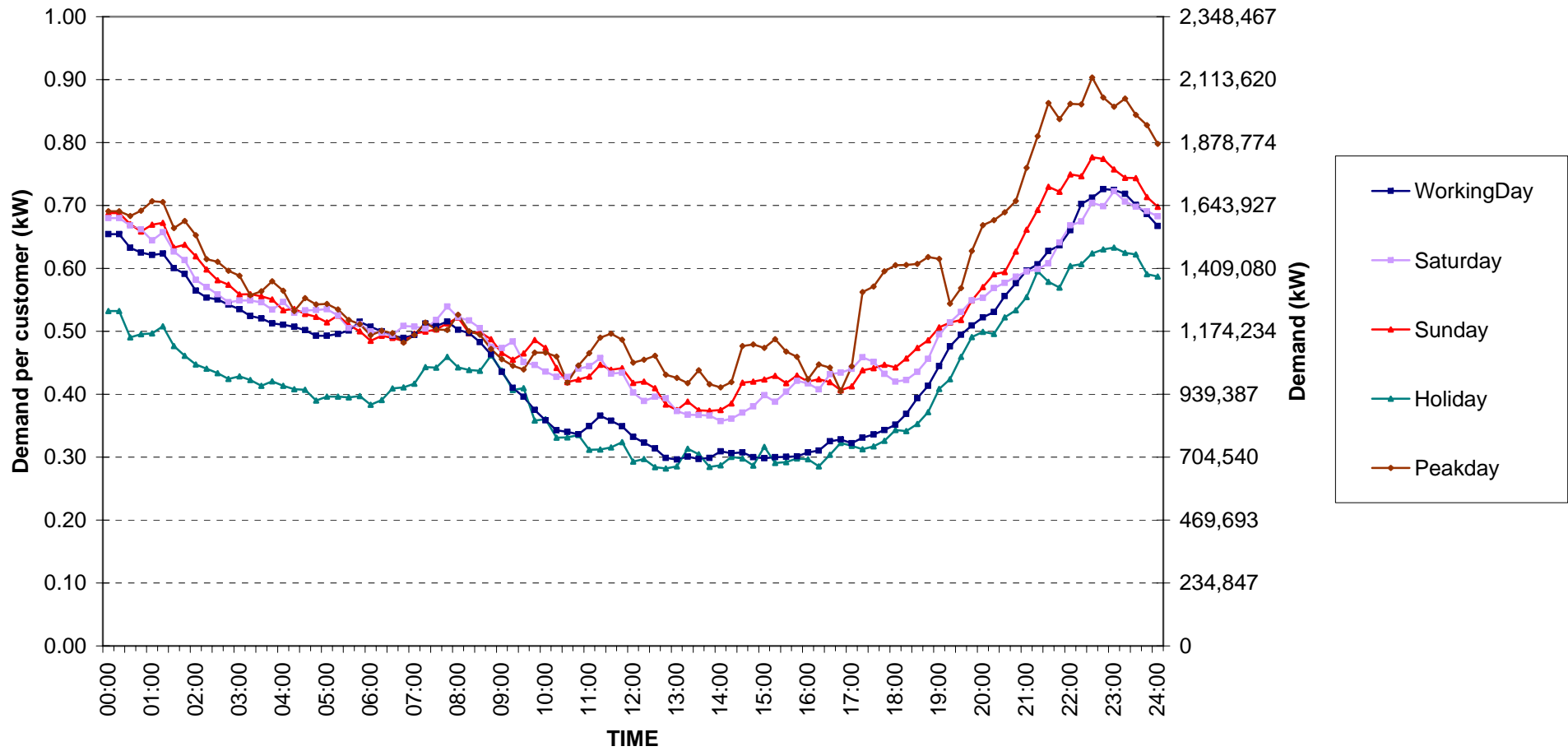


กราฟรูปที่ 2

Residential Load Profile

Date: 1 Jul, 2009 to 31 Jul, 2009

Number of sample customers = 154

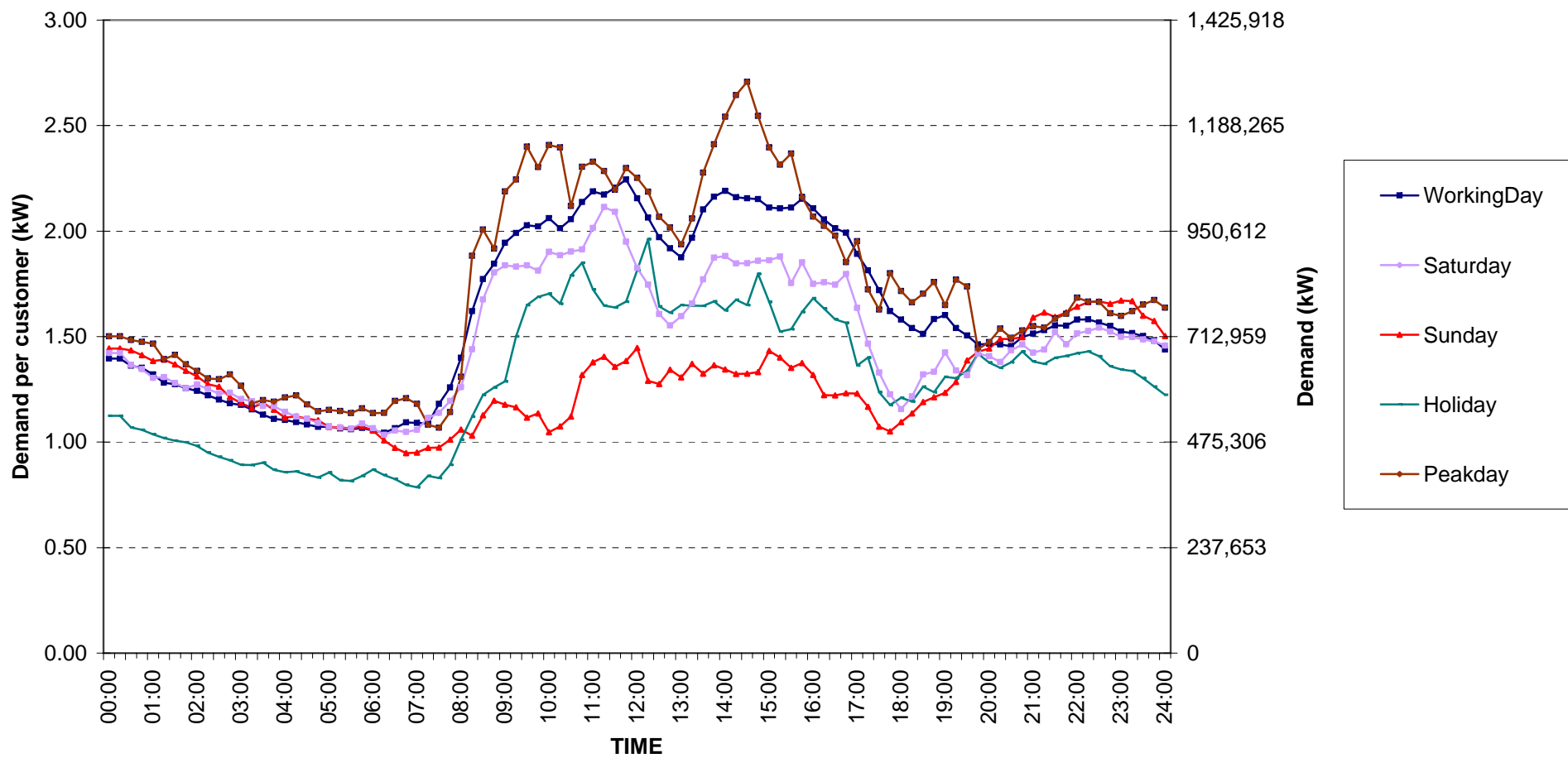


กราฟรูปที่ 3

Small General Services Load Profile

Date: 1 Jul, 2009 to 31 Jul, 2009

Number of sample customers = 205

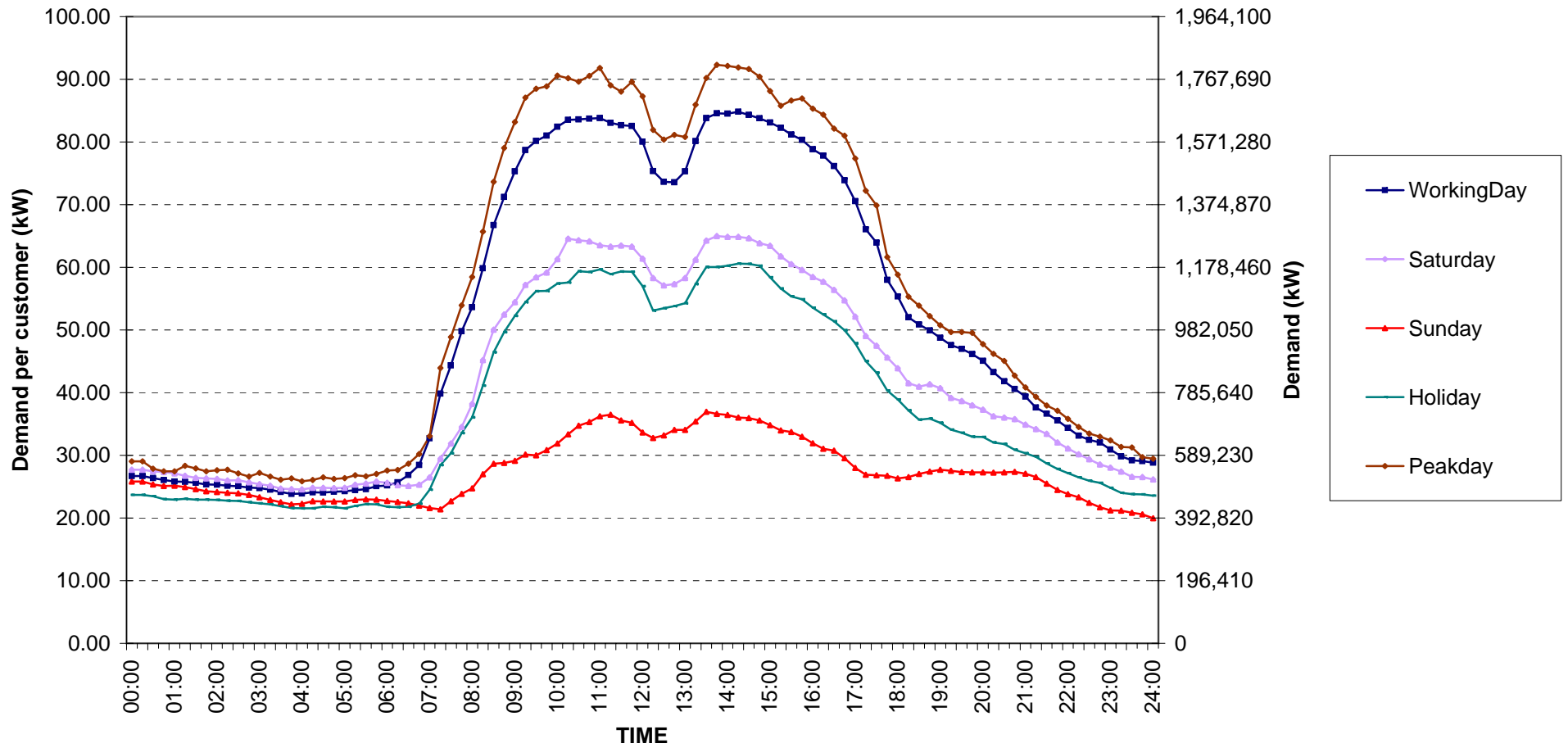


กราฟรูปที่ 4

Medium General Services Load Profile

Date: 1 Jul, 2009 to 31 Jul, 2009

Number of sample customers = 135

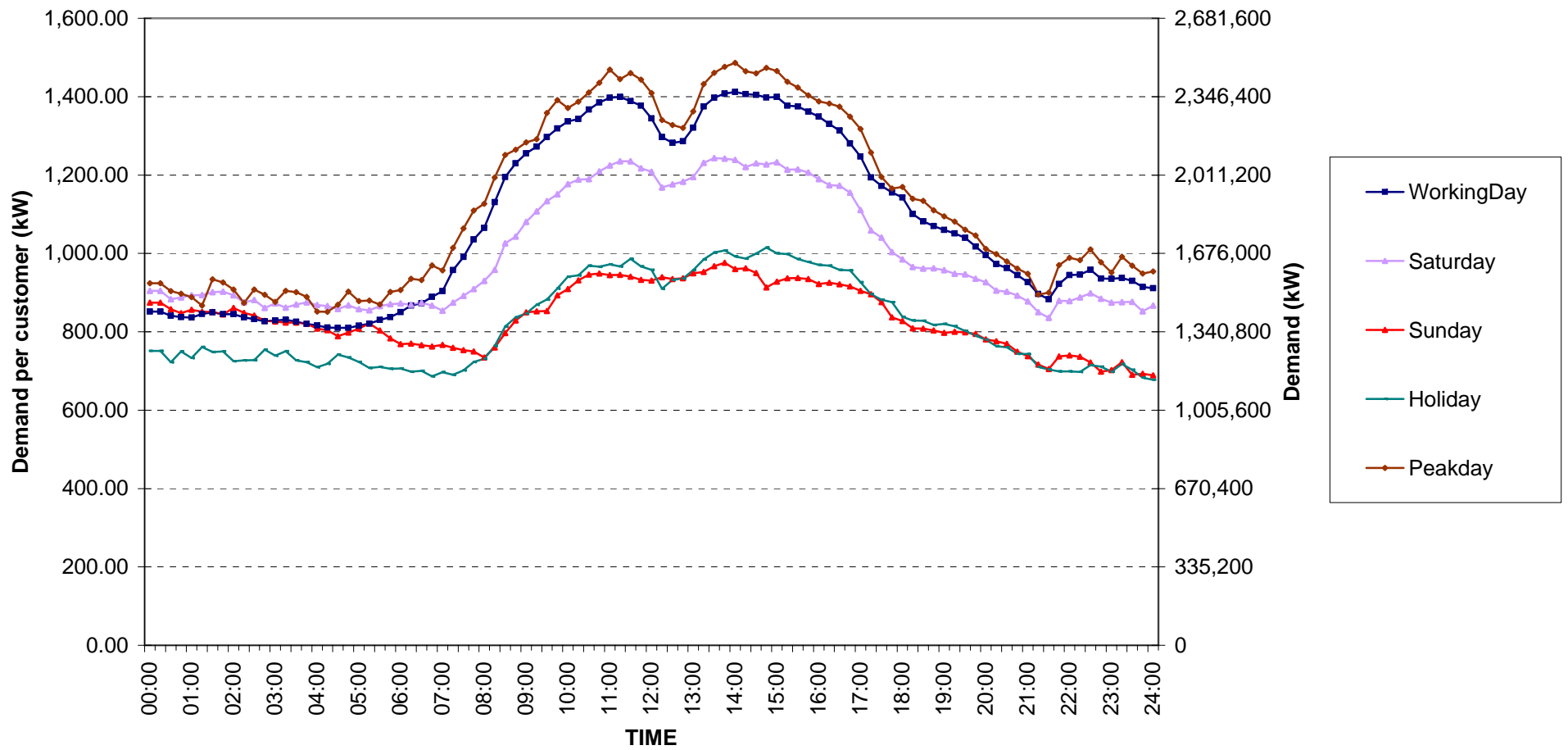


กราฟรูปที่ 5

Large General Services Load Profile

Date: 1 Jul, 2009 to 31 Jul, 2009

Number of sample customers = 284

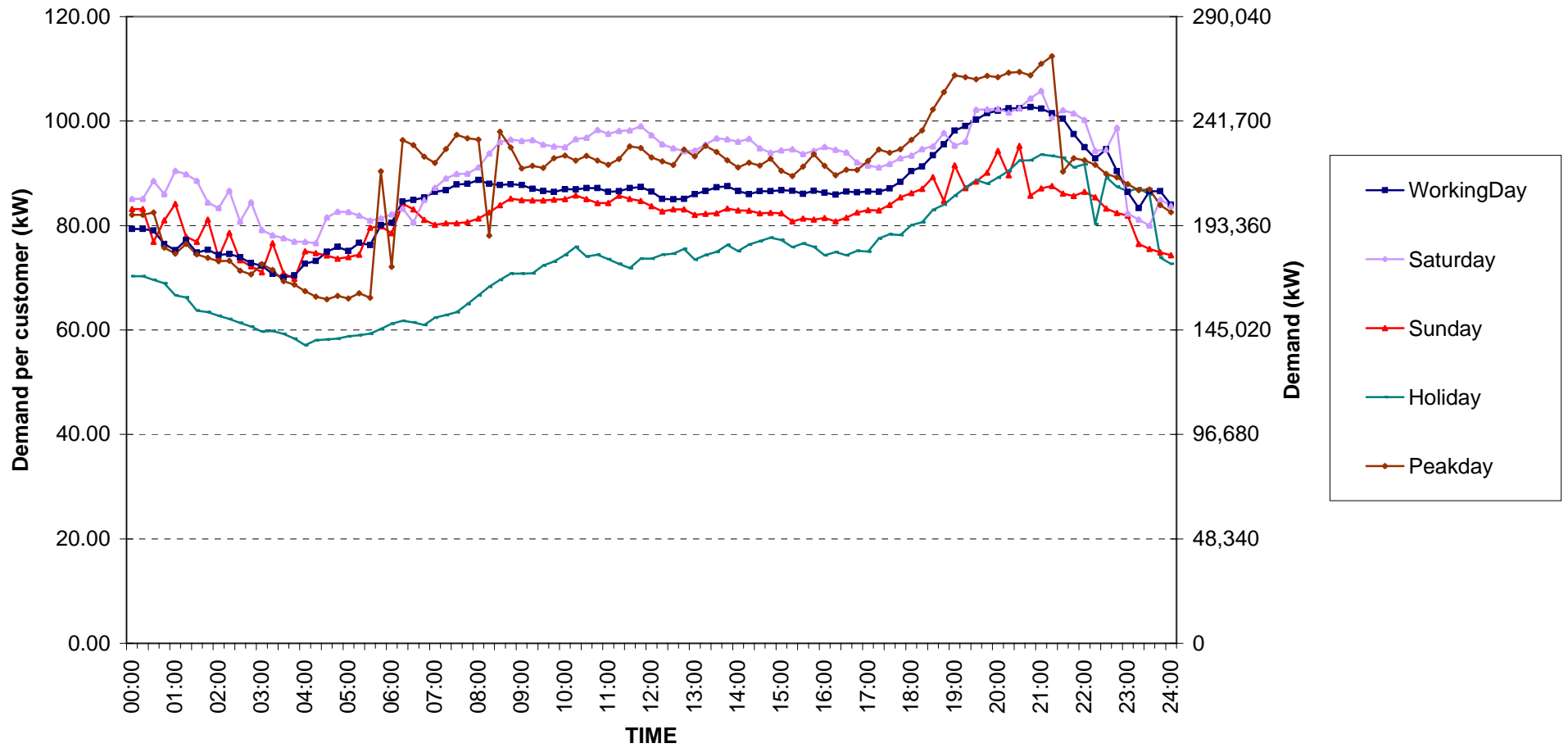


กราฟรูปที่ 6

Specific Business Load Profile

Date: 1 Jul, 2009 to 31 Jul, 2009

Number of sample customers = 74

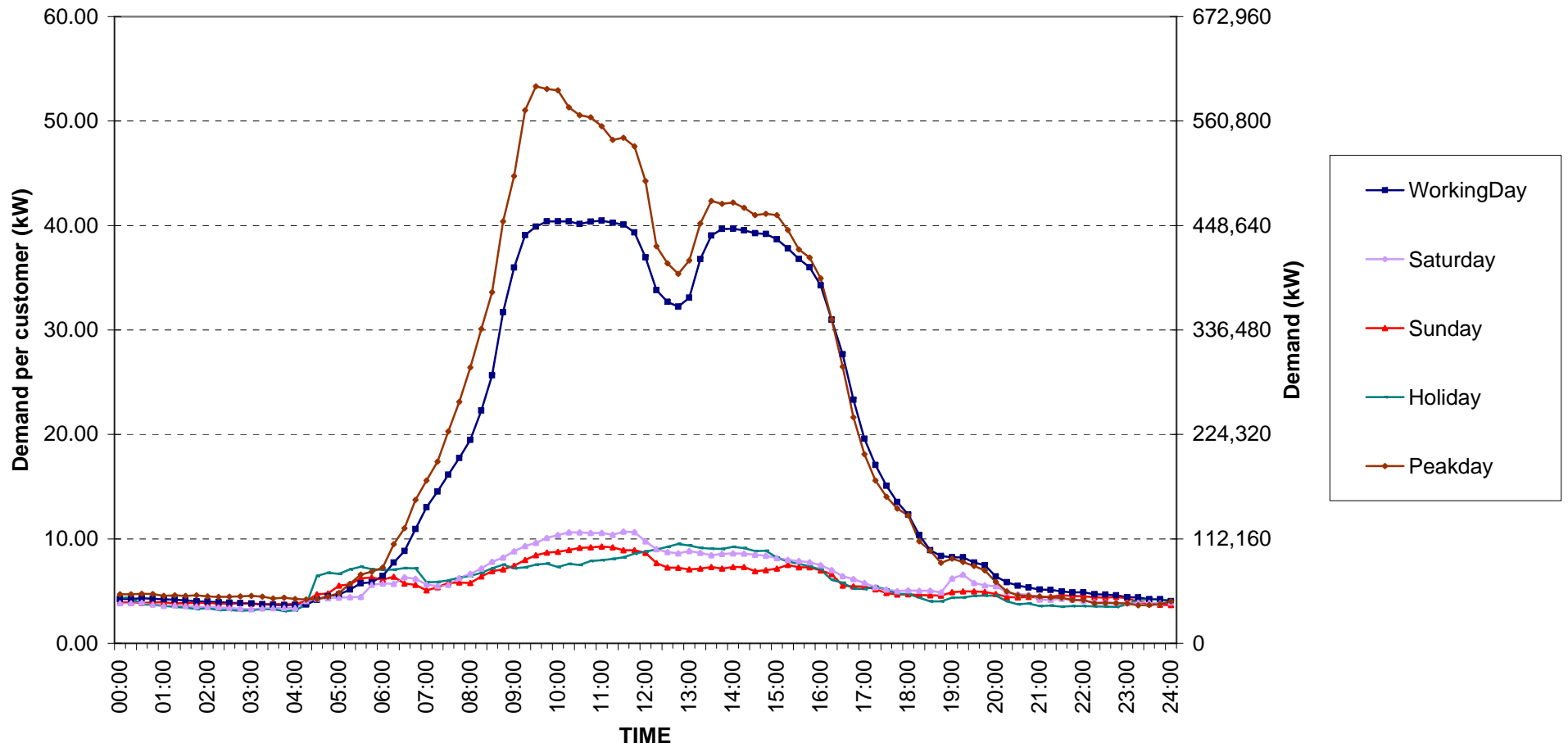


กราฟรูปที่ 7

Government institutions and non-profit organizations Load Profile

Date: 1 Jul, 2009 to 31 Jul, 2009

Number of sample customers = 50

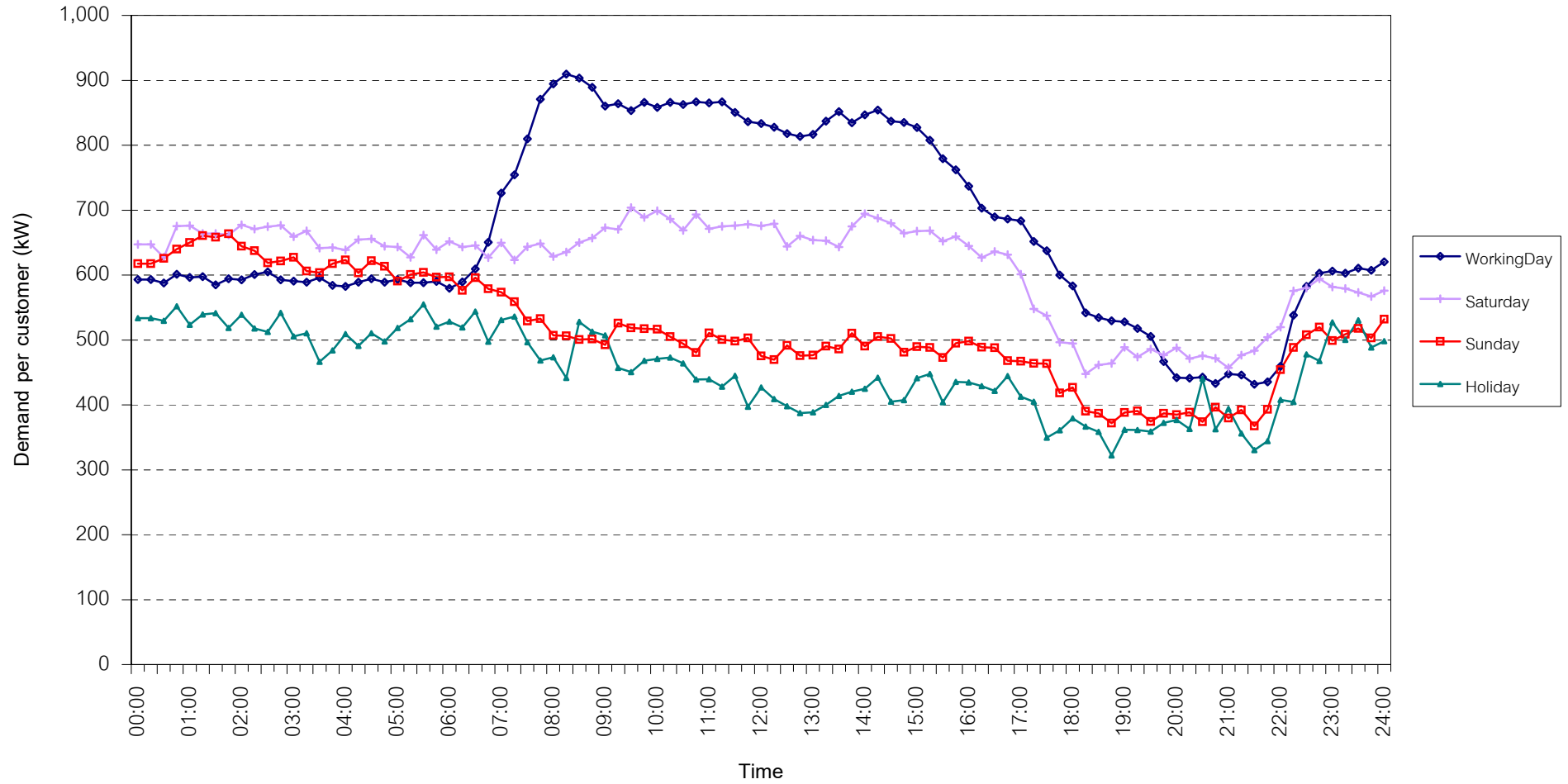


กราฟรูปที่ 8

TSIC 31 (Food Processing) Load Profile

Date: 1 Jul, 2009 to 31 Jul, 2009

Number of sample customers = 30

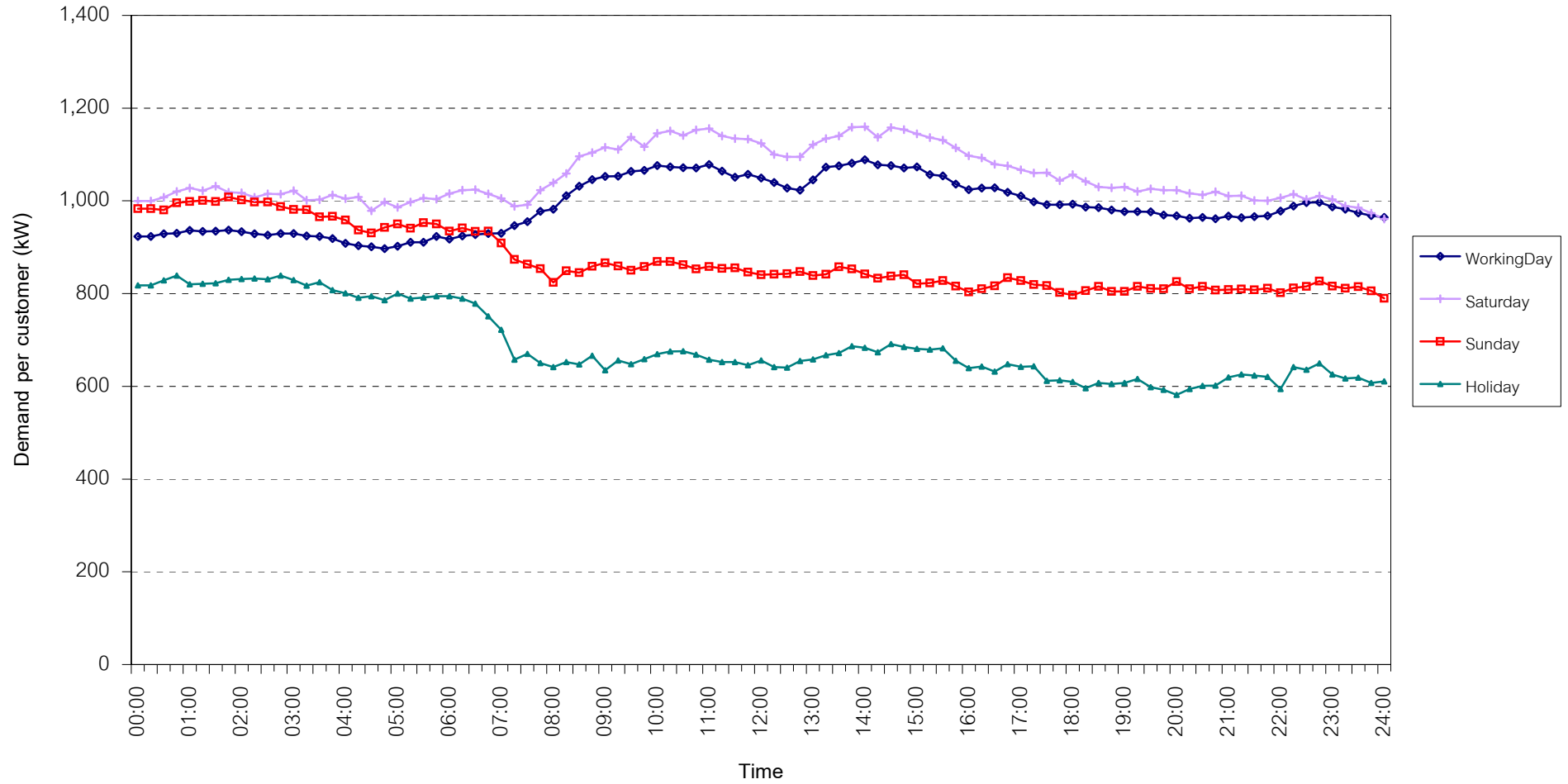


กราฟรูปที่ 9

TSIC 32 (Textiles) Load Profile

Date: 1 Jul, 2009 to 31 Jul, 2009

Number of sample customers = 63

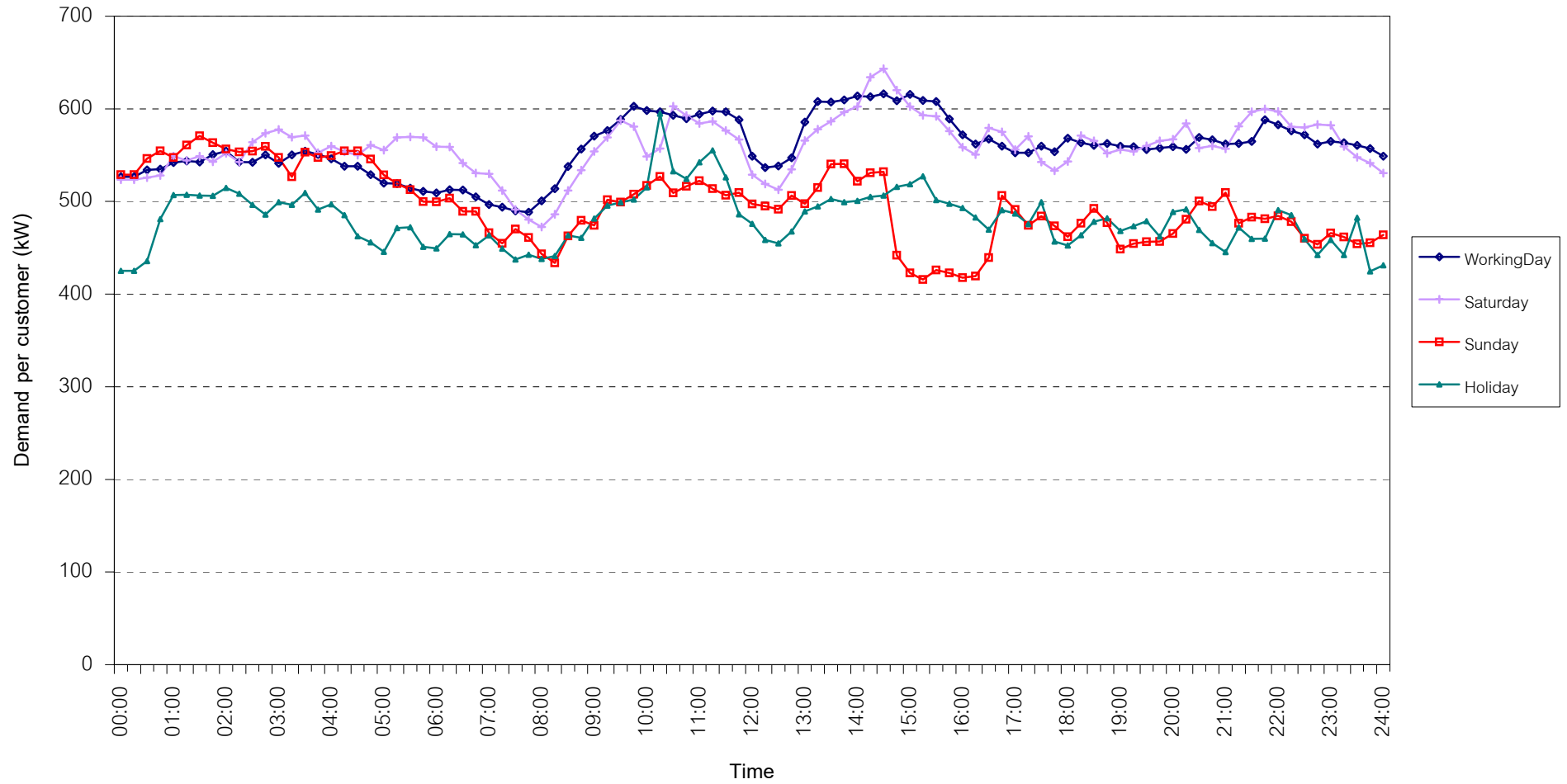


กราฟรูปที่ 10

TSIC 34 (Paper & Printing) Load Profile

Date: 1 Jul, 2009 to 31 Jul, 2009

Number of sample customers = 12

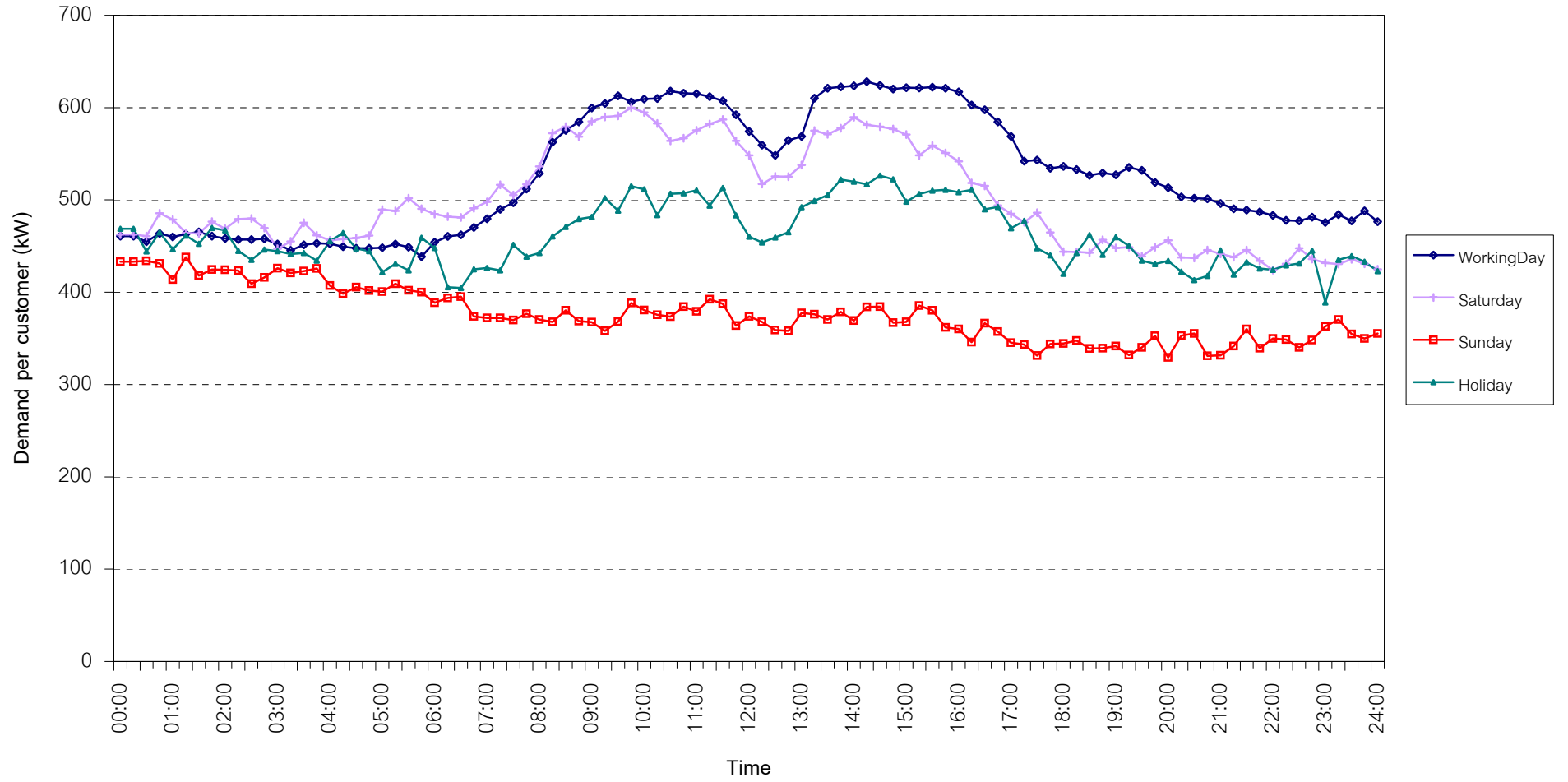


กราฟรูปที่ 11

TSIC 35 (Chemical & Petroleum) Load Profile

Date: 1 Jul, 2009 to 31 Jul, 2009

Number of sample customers = 72

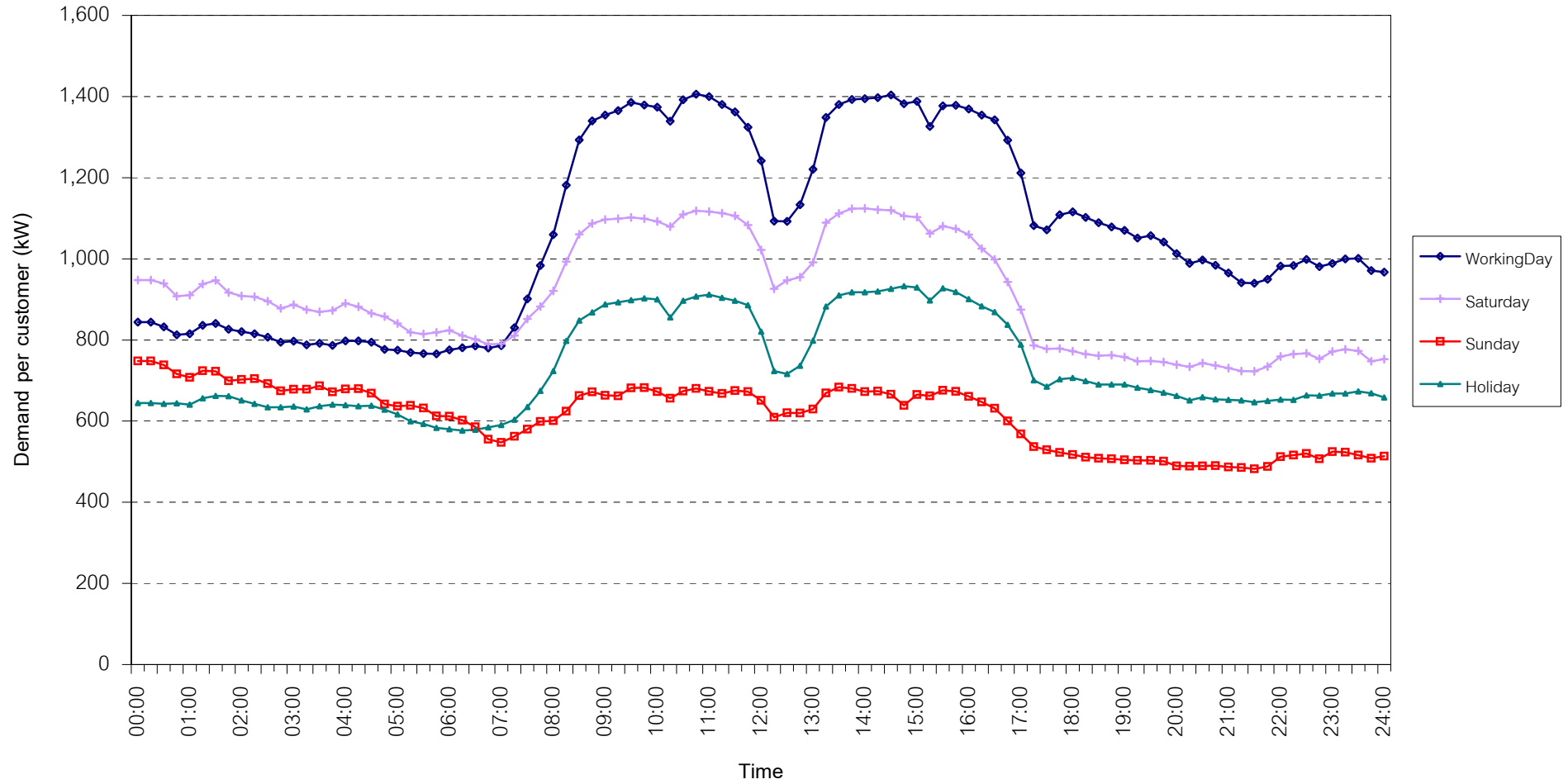


กราฟรูปที่ 12

TSIC 38 (Fabricated Metal Products) Load Profile

Date: 1 Jul, 2009 to 31 Jul, 2009

Number of sample customers = 62

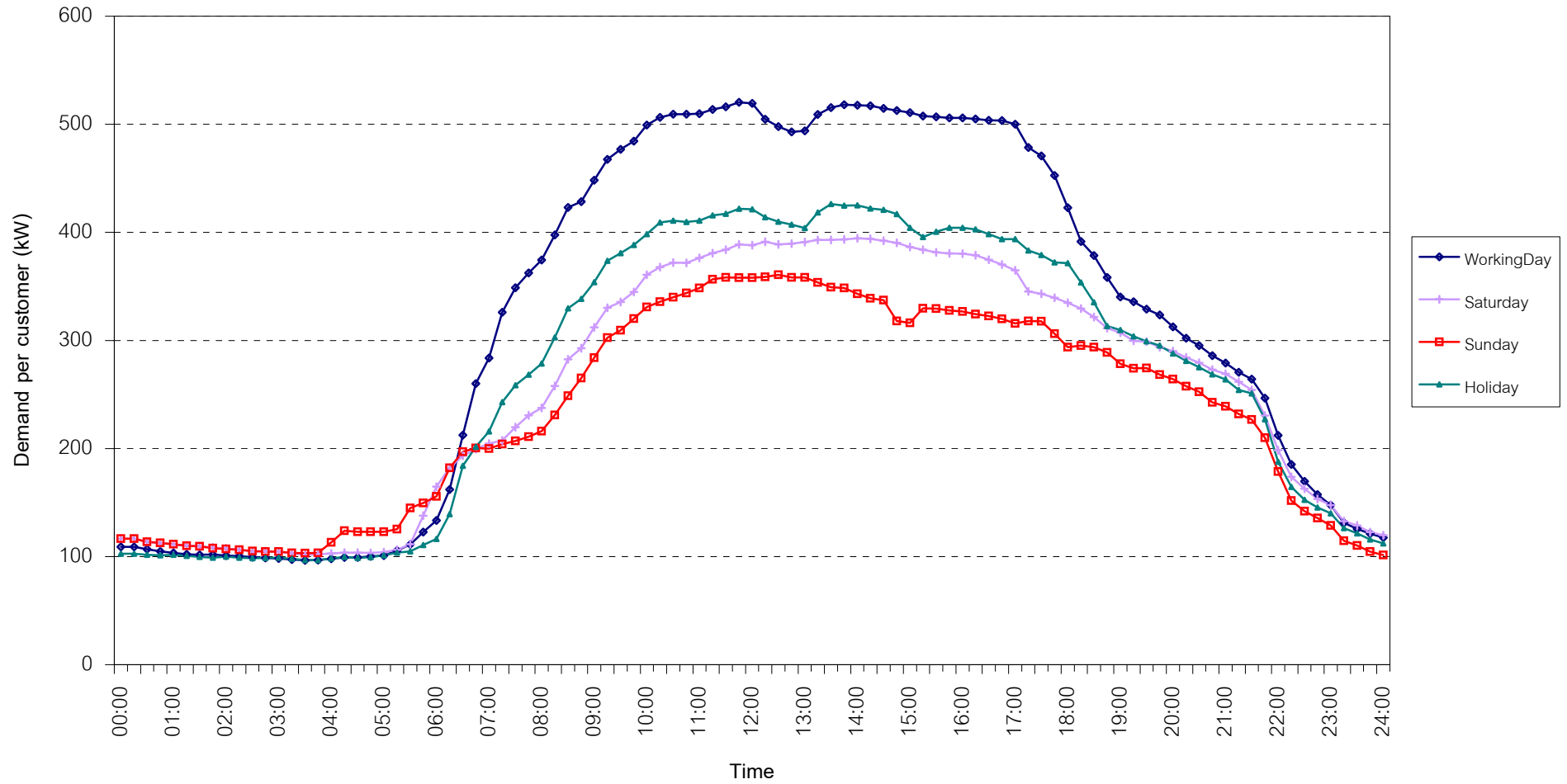


กราฟรูปที่ 13

TSIC 61 (Wholesale Trade) Load Profile

Date: 1 Jul, 2009 to 31 Jul, 2009

Number of sample customers = 36

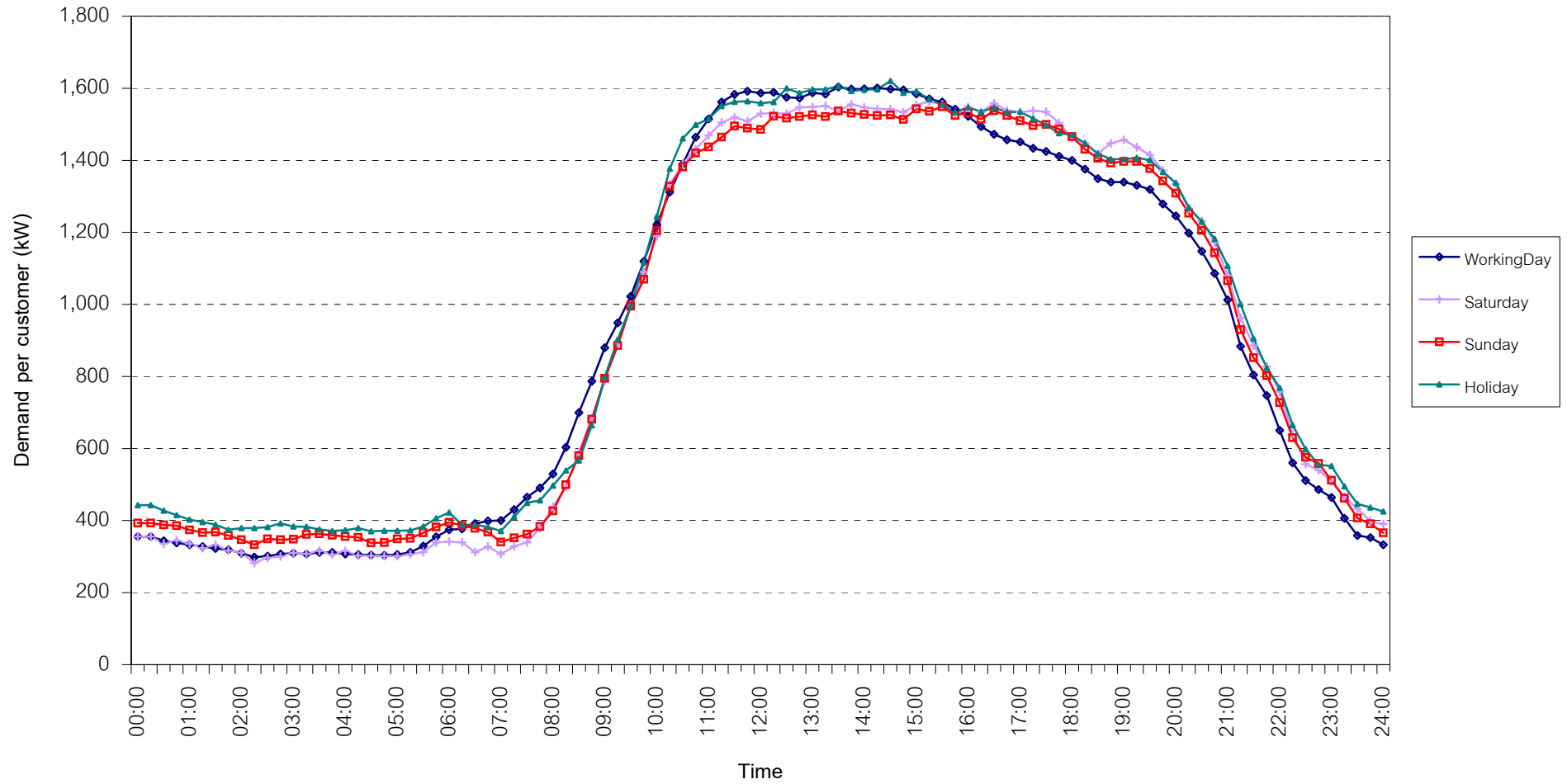


กราฟรูปที่ 14

TSIC 62 (Retail Trade) Load Profile

Date: 1 Jul, 2009 to 31 Jul, 2009

Number of sample customers = 87

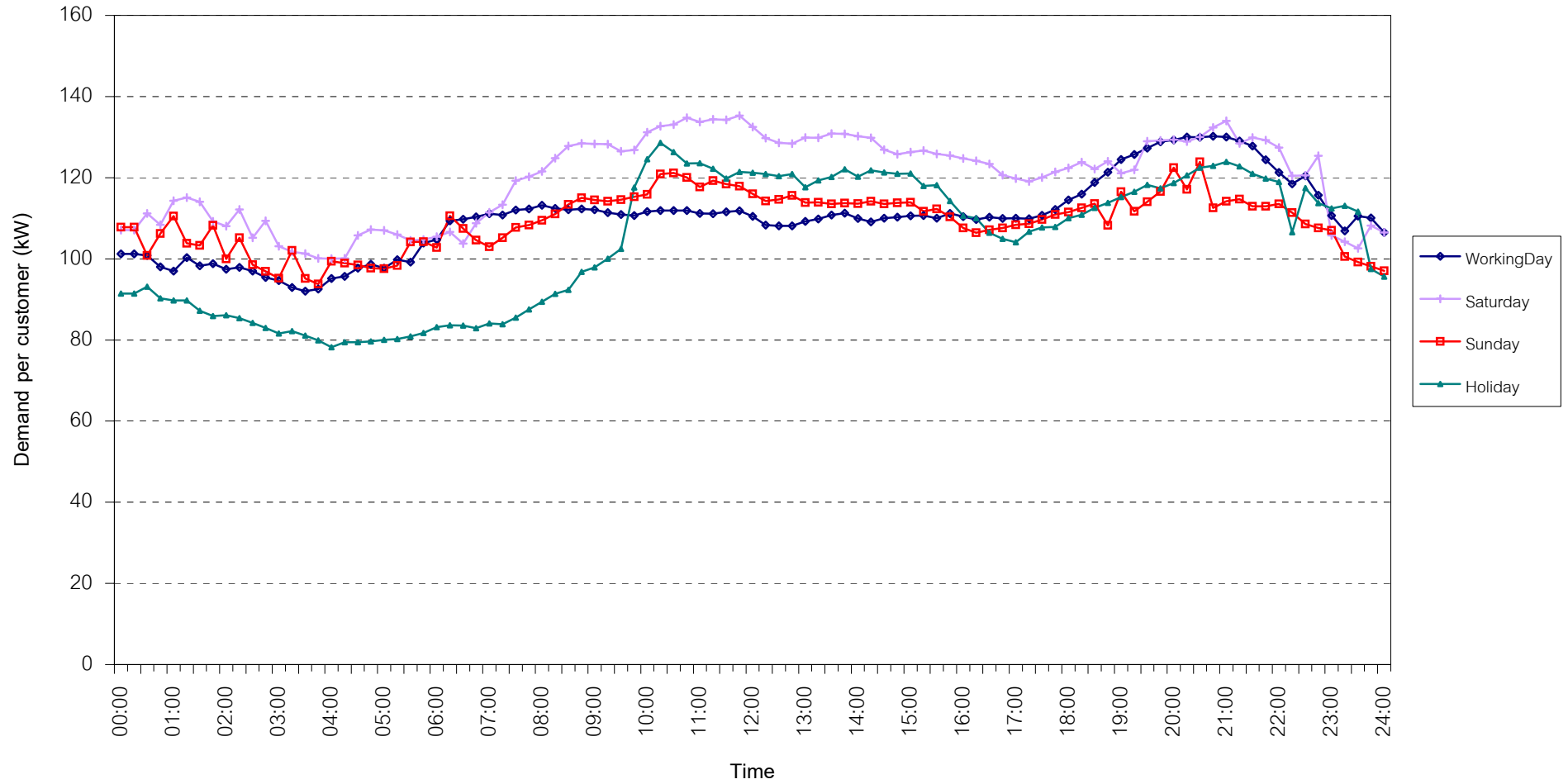


กราฟรูปที่ 15

TSIC 63 (Hotels and restaurants) Load Profile

Date: 1 Jul, 2009 to 31 Jul, 2009

Number of sample customers = 107

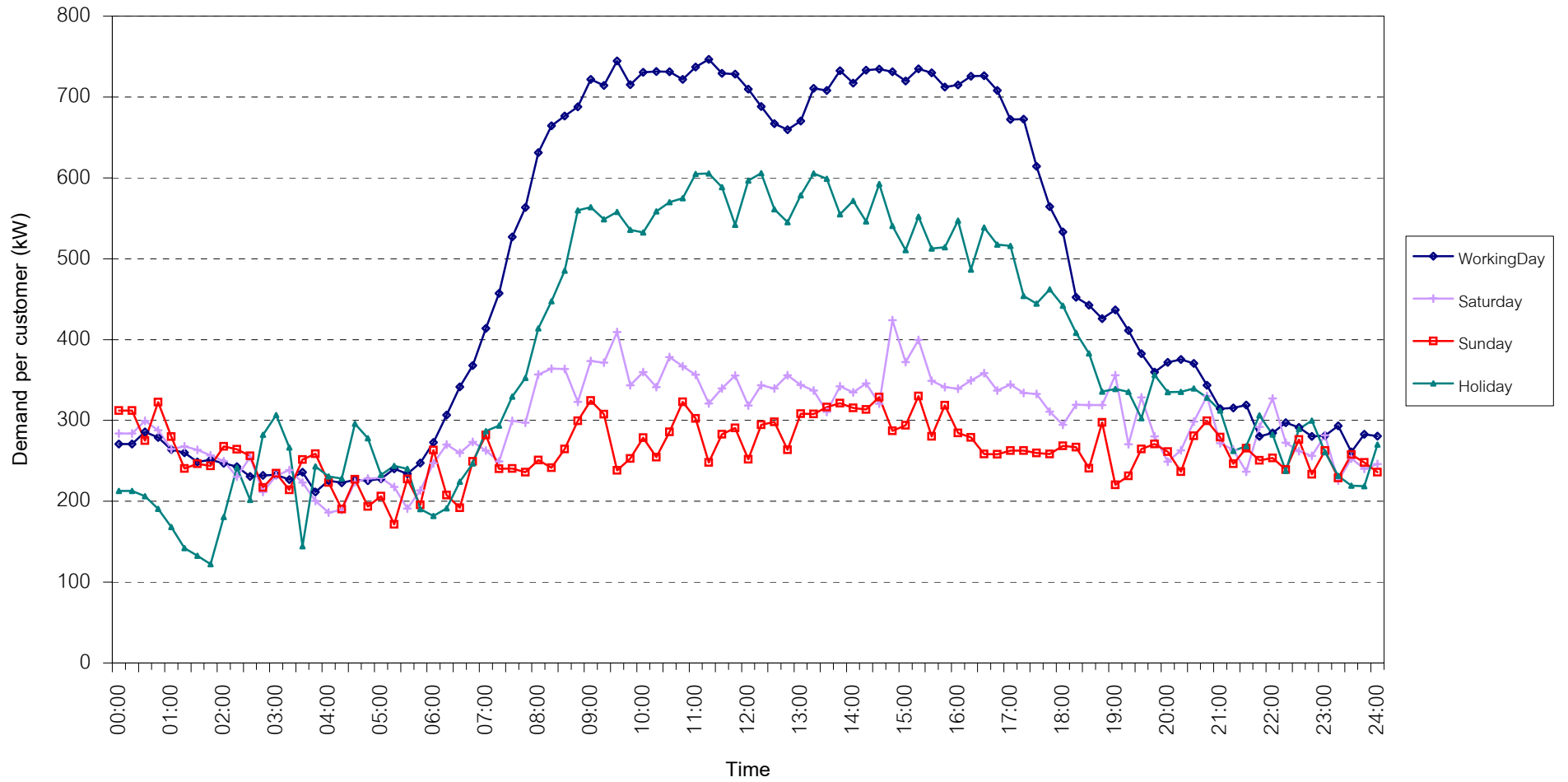


กราฟรูปที่ 16

TSIC 83 (Real Estate) Load Profile

Date: 1 Jul, 2009 to 31 Jul, 2009

Number of sample customers = 40

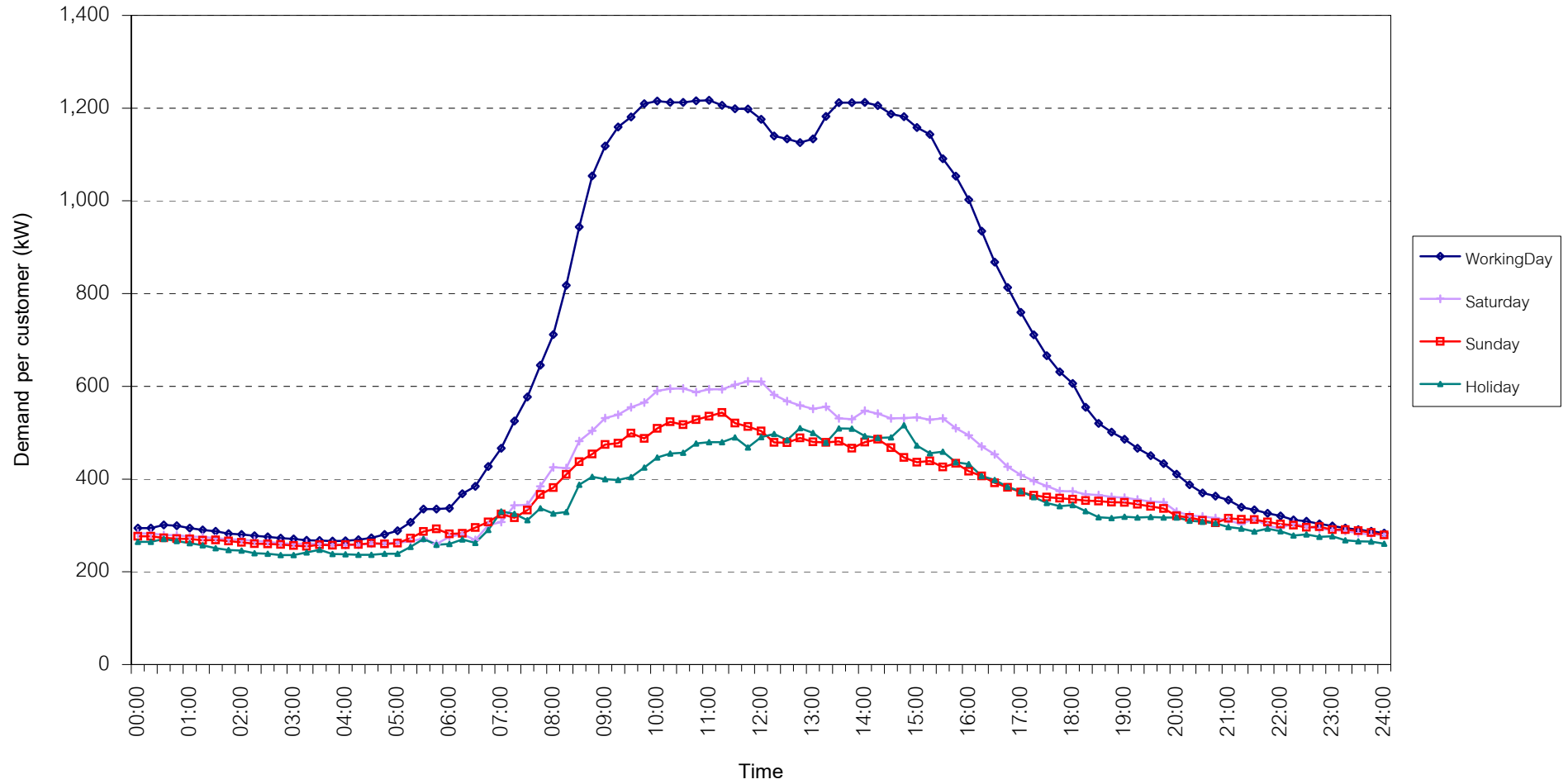


กราฟรูปที่ 17

TSIC 93 (Social Services) Load Profile

Date: 1 Jul, 2009 to 31 Jul, 2009

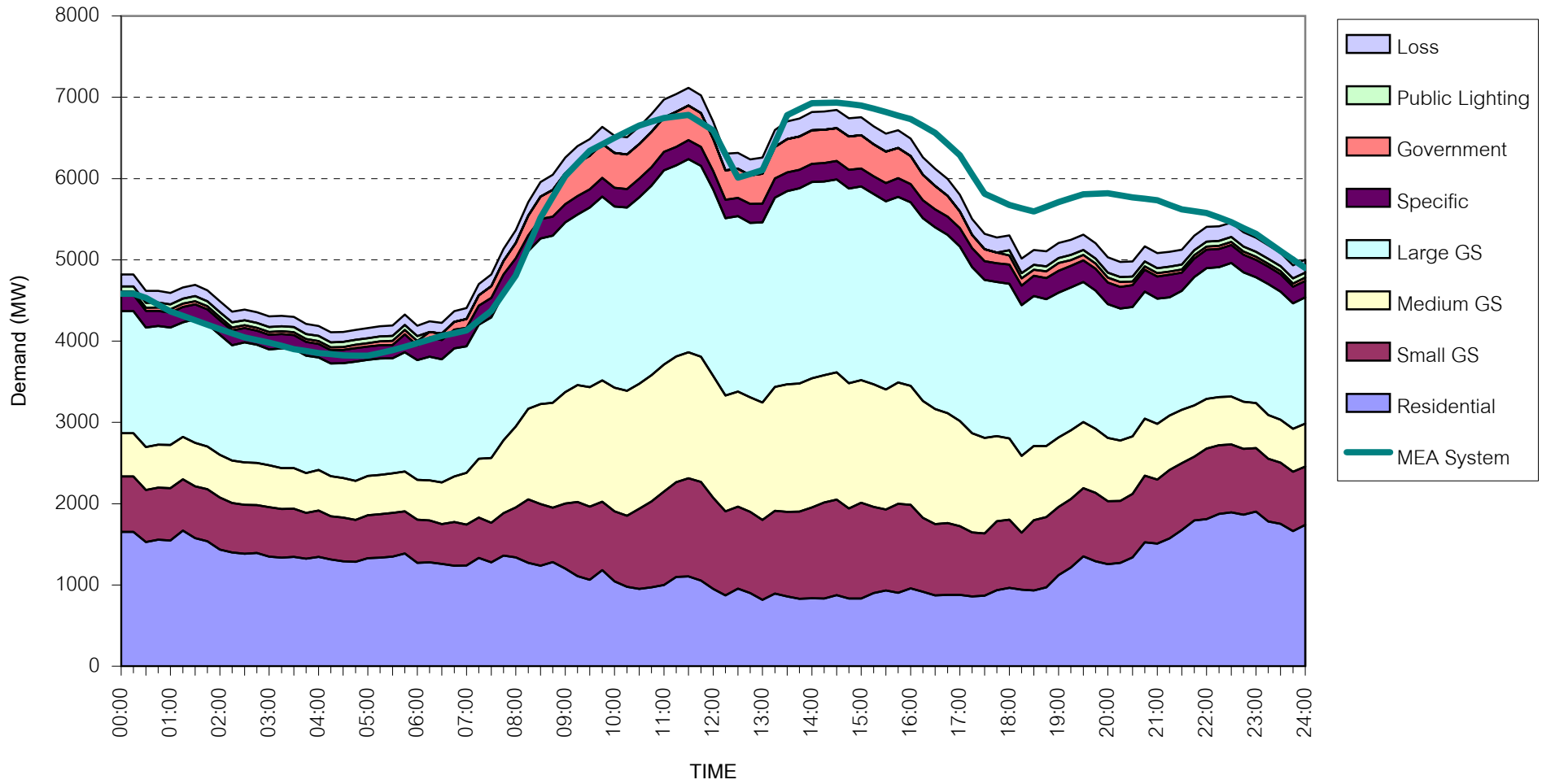
Number of sample customers = 25



กราฟรูปที่ 18

MEA's System Load Profile

Peak Day 28 Jul, 2009 at 14:30



กราฟรูปที่ 19