



# ข้อมูลการศึกษาลักษณะการใช้ไฟฟ้า

เดือน มกราคม 2552



Table 1-1

COINCIDENT WITH LOAD RESEARCH SYSTEM'S PEAK ON January 29,2009 time 11:30 6,156.54 MW  
( MEA SYSTEM'S PEAK ON January 29,2009 time 14:30 6,231.67 MW )

CLASS	Number of Customers	Kilowatt hours	Coincident Peak (MEA System Peak at time 14:30)		Coincident Peak (Load Research System Peak at time 11:30)		Sector Diversified Demand		
			MW	Contribution (%)	MW	Contribution (%)	Max MW.	Date	Time
Residential	2,287,171	595,560,086	682.13	11.30	737.20	11.97	1,638.42	29 Jan 09	22:30
Small General Service	479,846	427,394,803	1,151.80	19.08	1,306.94	21.23	1,445.23	21 Jan 09	10:30
Medium General Service	19,716	528,528,784	1,399.75	23.19	1,352.04	21.96	1,534.43	29 Jan 09	13:45
Large General Service	1,663	1,049,346,266	2,080.46	34.46	2,060.41	33.47	2,243.89	23 Jan 09	13:45
Specific Business	2,349	125,850,587	226.85	3.76	220.78	3.59	228.26	30 Jan 09	13:15
Government and non Profit organization	11,305	81,933,304	359.94	5.96	346.38	5.63	487.49	26 Jan 09	13:45
Public Lighting	4,176	20,505,584	0.00	0.00	0.00	0.00	53.58	-	-
Loss	-	64,964,279	135.96	2.25	132.80	2.16	135.96	29 Jan 09	14:30
TOTAL	2,806,226	2,894,083,693	6,036.89	100	6,156.54	100	6,156.54	29 Jan 09	11:30



Table 1-2

Number of sample customers on January, 2009

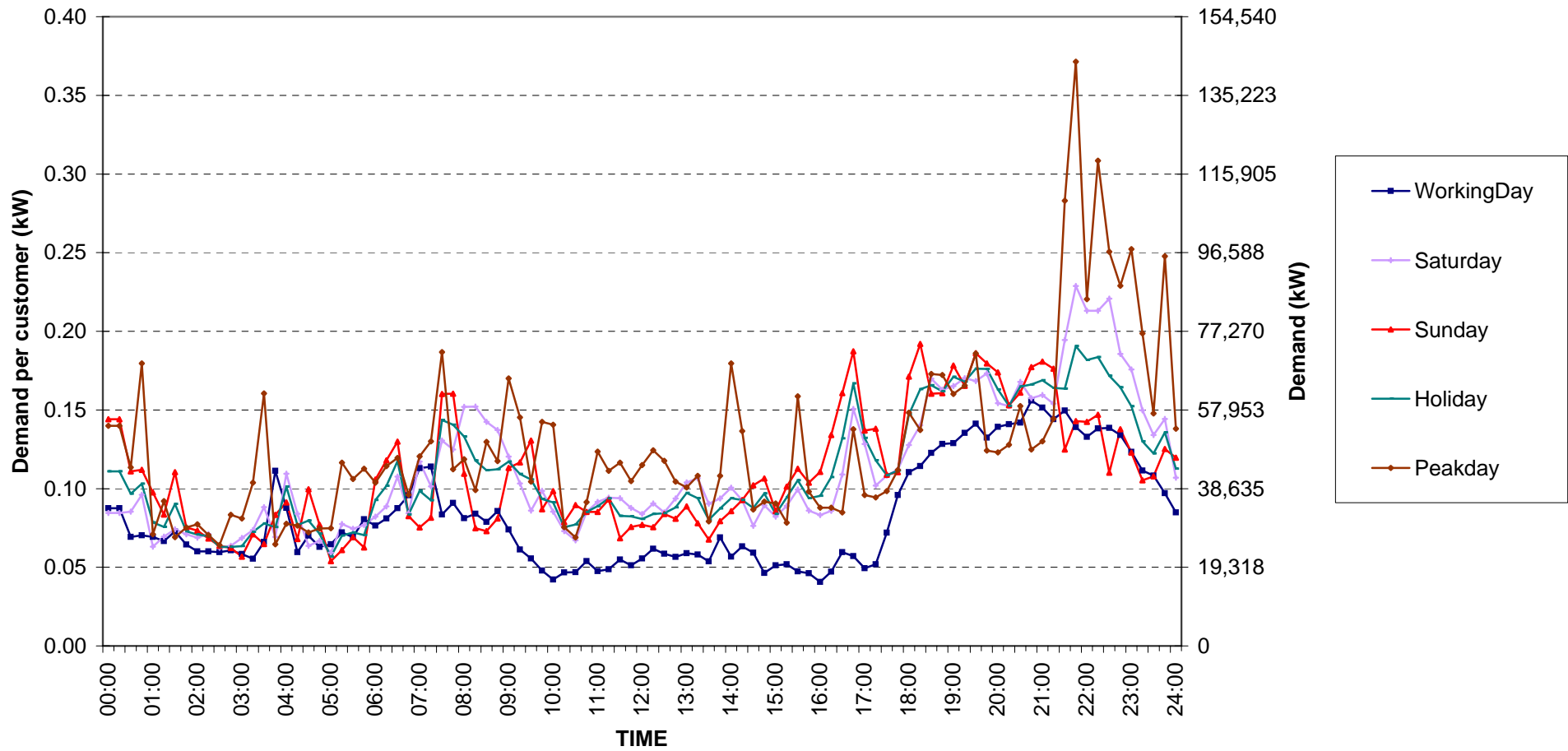
CLASS	Number of sample customers (Target)	Number of sample customers (Collected)
Residential	191	191
Small General Service	297	297
Medium General Service	163	163
Large General Service	328	328
Specific Business	76	76
Government and Non-profit Organization	68	68
TOTAL	1,123	1,123



## Residential ( Energy Consumption less than 150 kWh per month )

Date: 1 Jan, 2009 to 31 Jan, 2009

Number of sample customers = 10



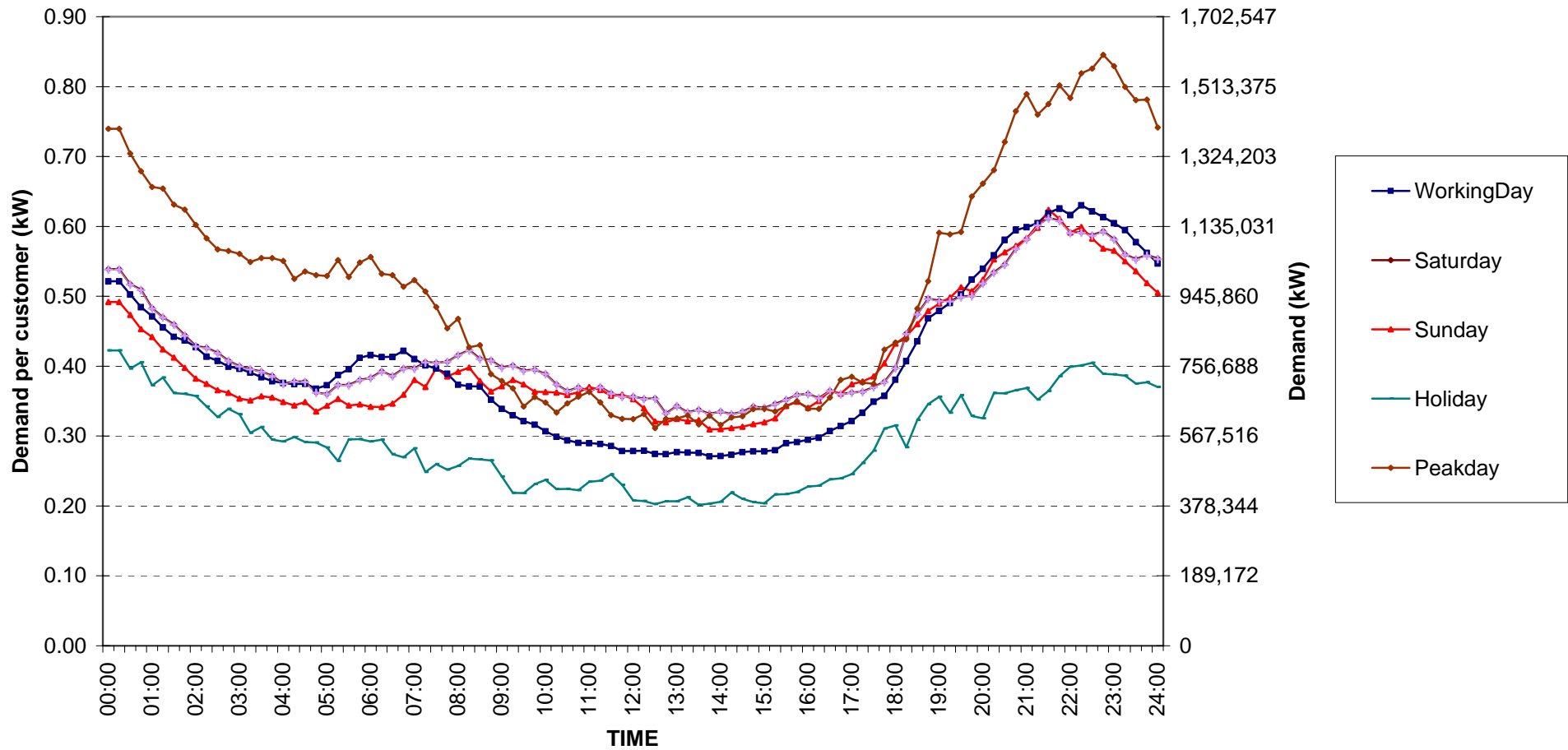
กราฟรูปที่ 1



## Residential ( Energy Consumption more than 150 kWh per month )

Date: 1 Jan, 2009 to 31 Jan, 2009

Number of sample customers = 181



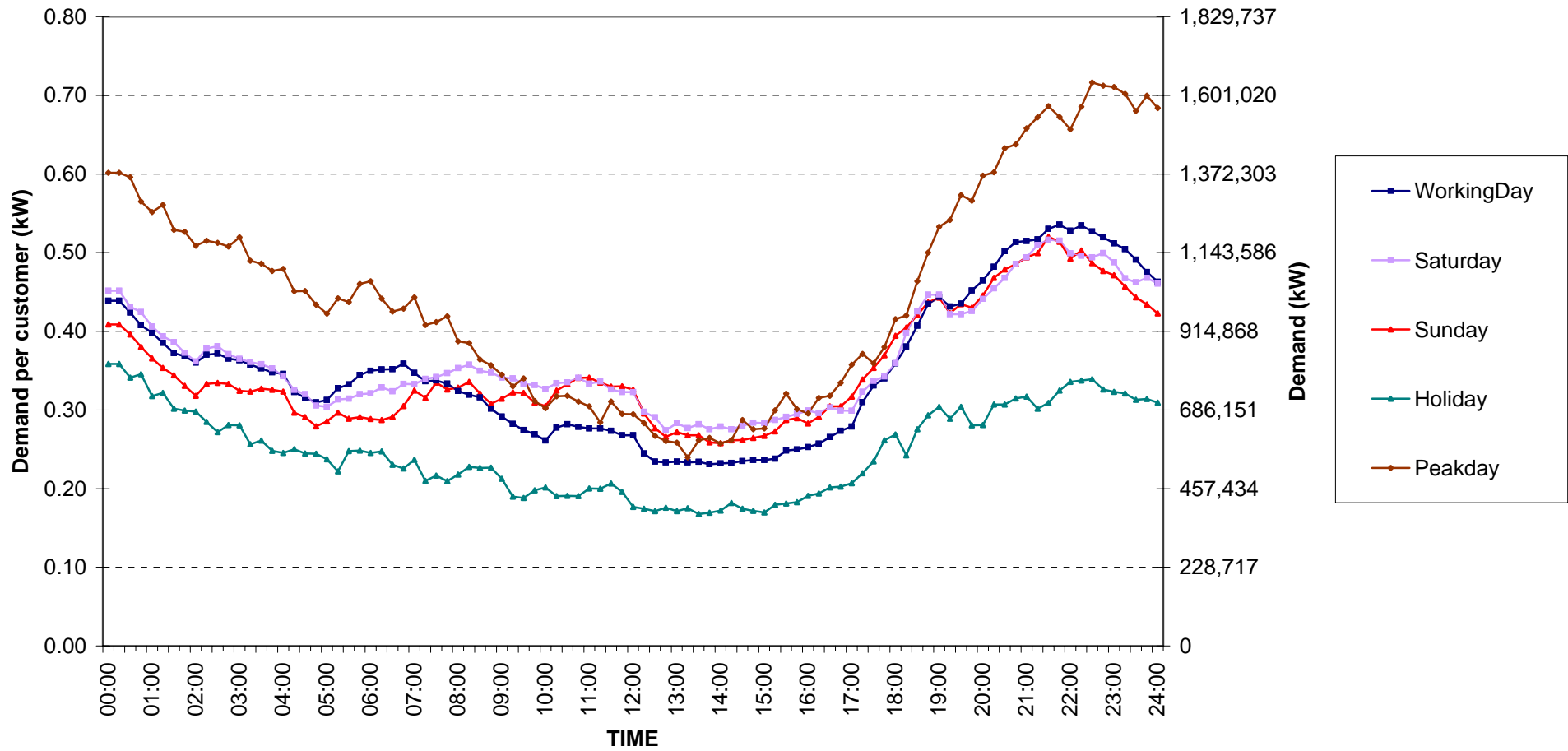
กราฟรูปที่ 2



## Residential Load Profile

Date: 1 Jan, 2009 to 31 Jan, 2009

Number of sample customers = 191



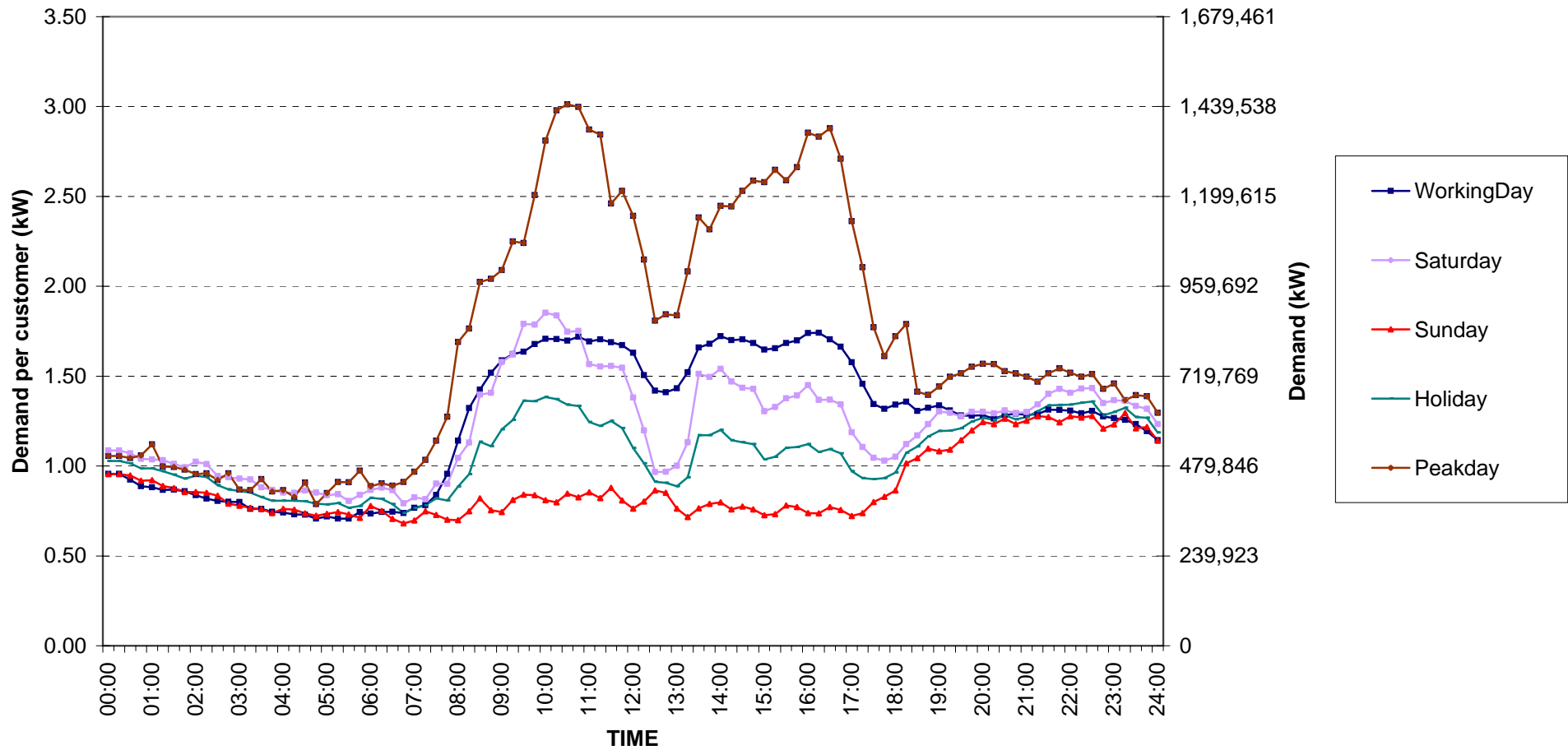
กราฟรูปที่ 3



Small General Services Load Profile

Date: 1 Jan, 2009 to 31 Jan, 2009

Number of sample customers = 297



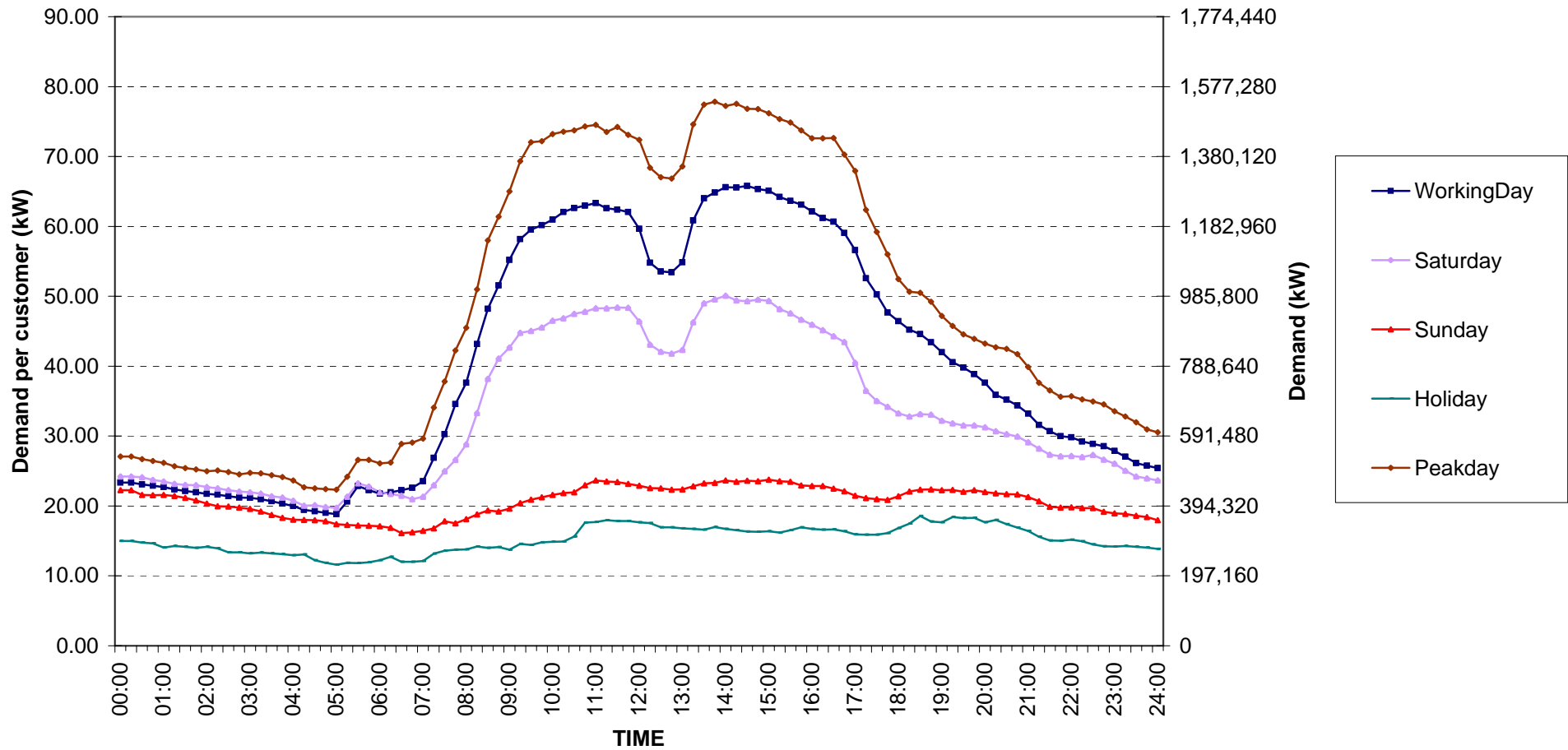
กราฟรูปที่ 4



## Medium General Services Load Profile

Date: 1 Jan, 2009 to 31 Jan, 2009

Number of sample customers = 163



กราฟรูปที่ 5

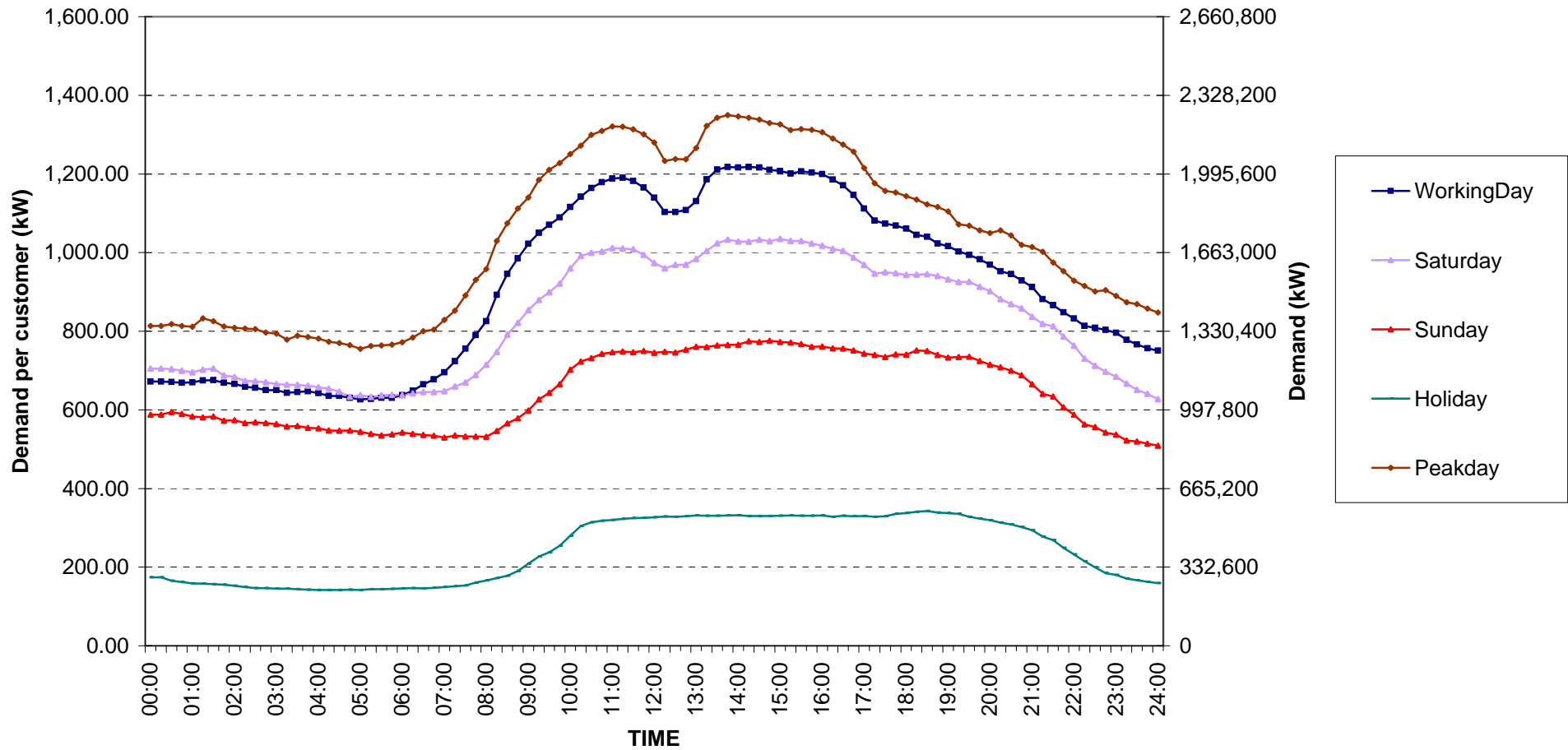




### Large General Services Load Profile

Date: 1 Jan, 2009 to 31 Jan, 2009

Number of sample customers = 328



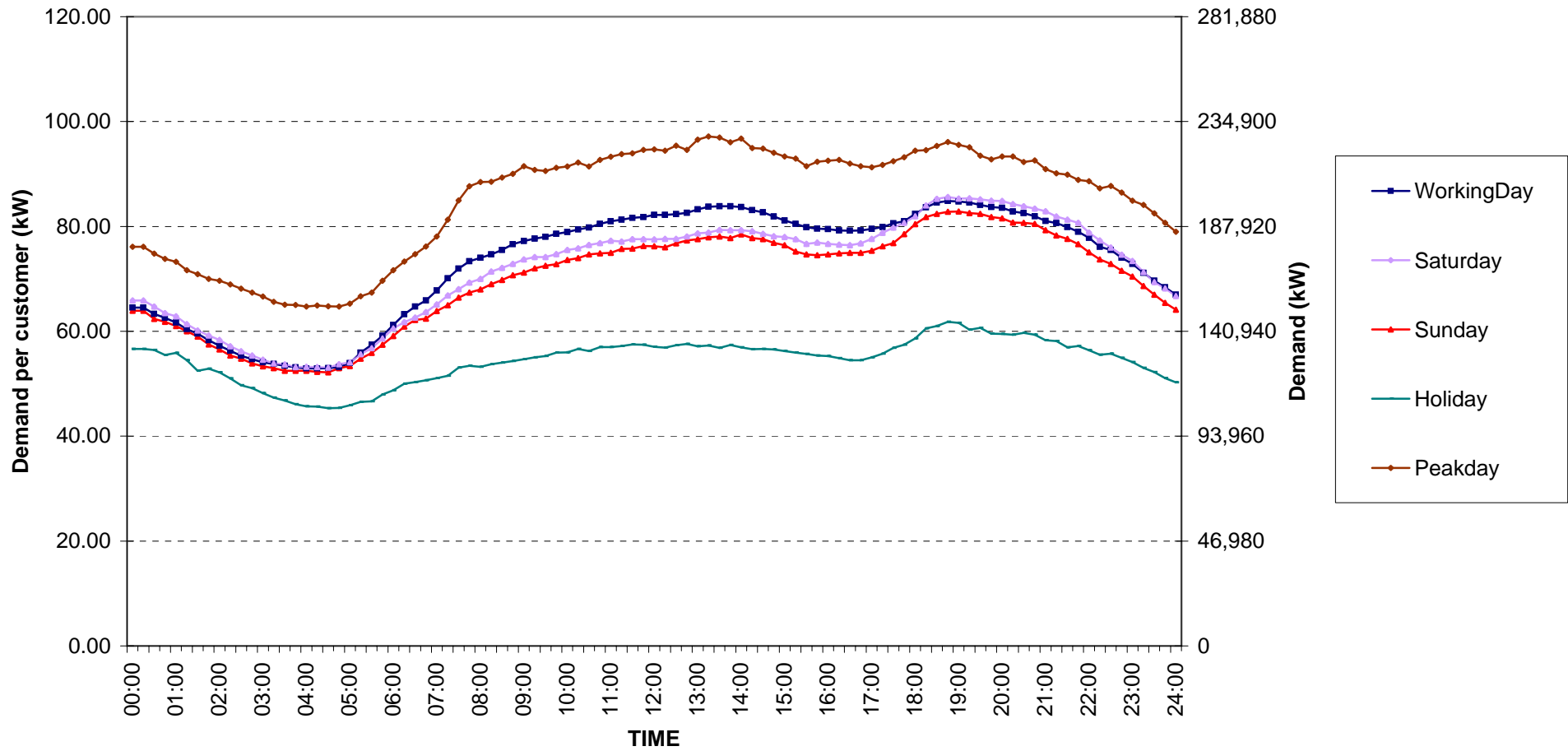
กราฟรูปที่ 6



## Specific Business Load Profile

Date: 1 Jan, 2009 to 31 Jan, 2009

Number of sample customers = 76



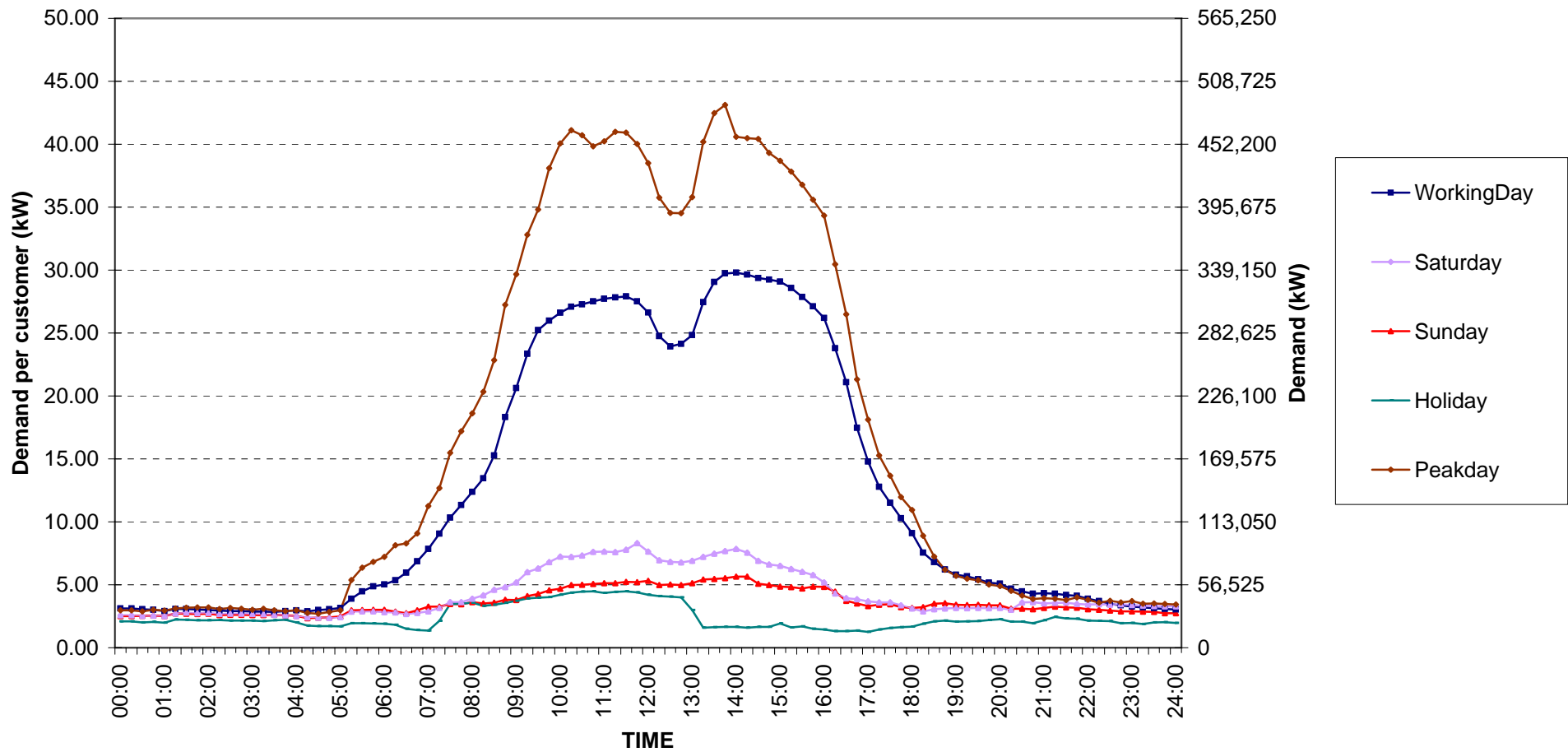
กราฟรูปที่ 7



## Government institutions and non-profit organizations Load Profile

Date: 1 Jan, 2009 to 31 Jan, 2009

Number of sample customers = 68



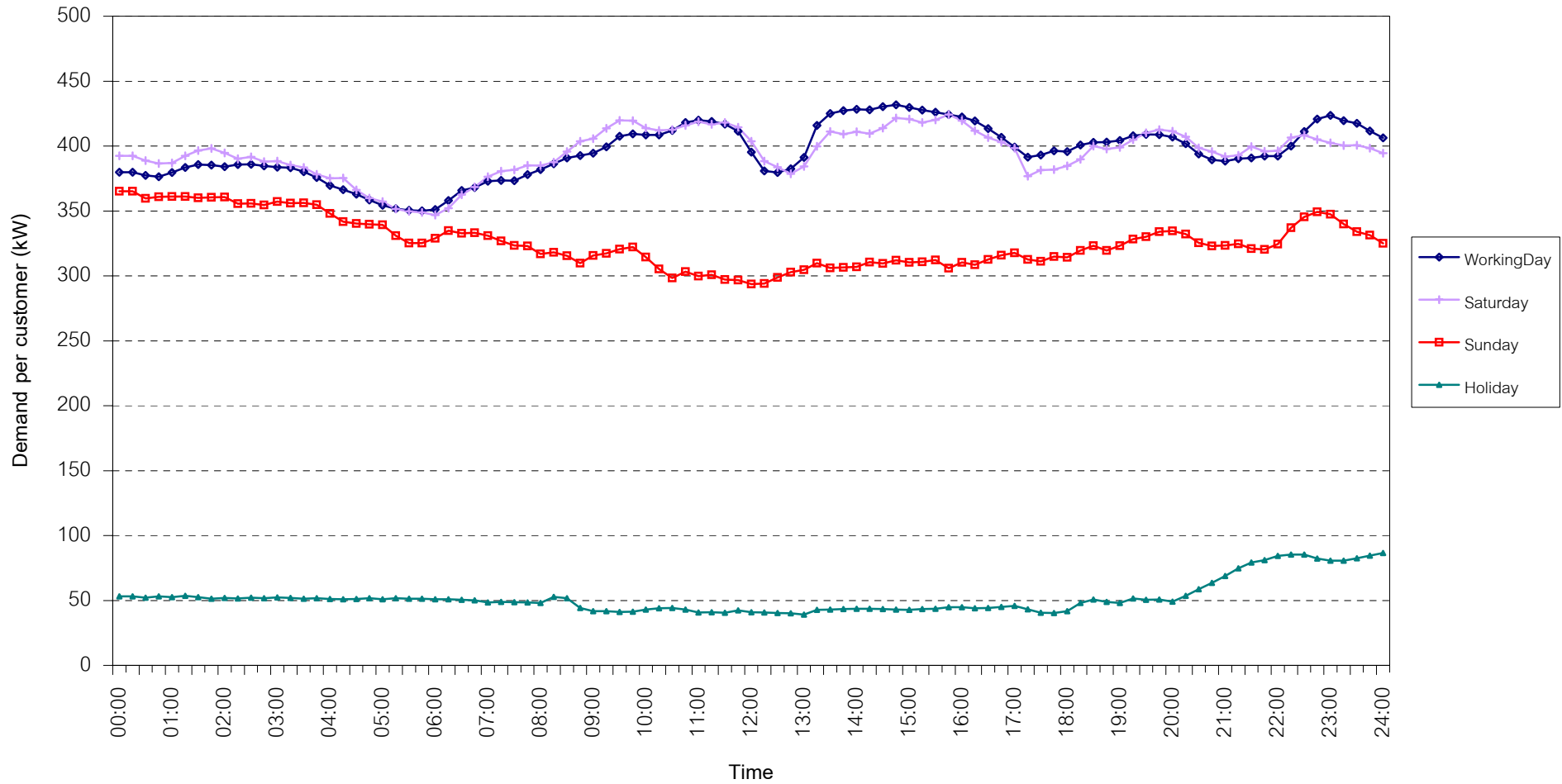
กราฟรูปที่ 8



## TSIC 31 (Food Processing) Load Profile

Date: 1 Jan, 2009 to 31 Jan, 2009

Number of sample customers = 30



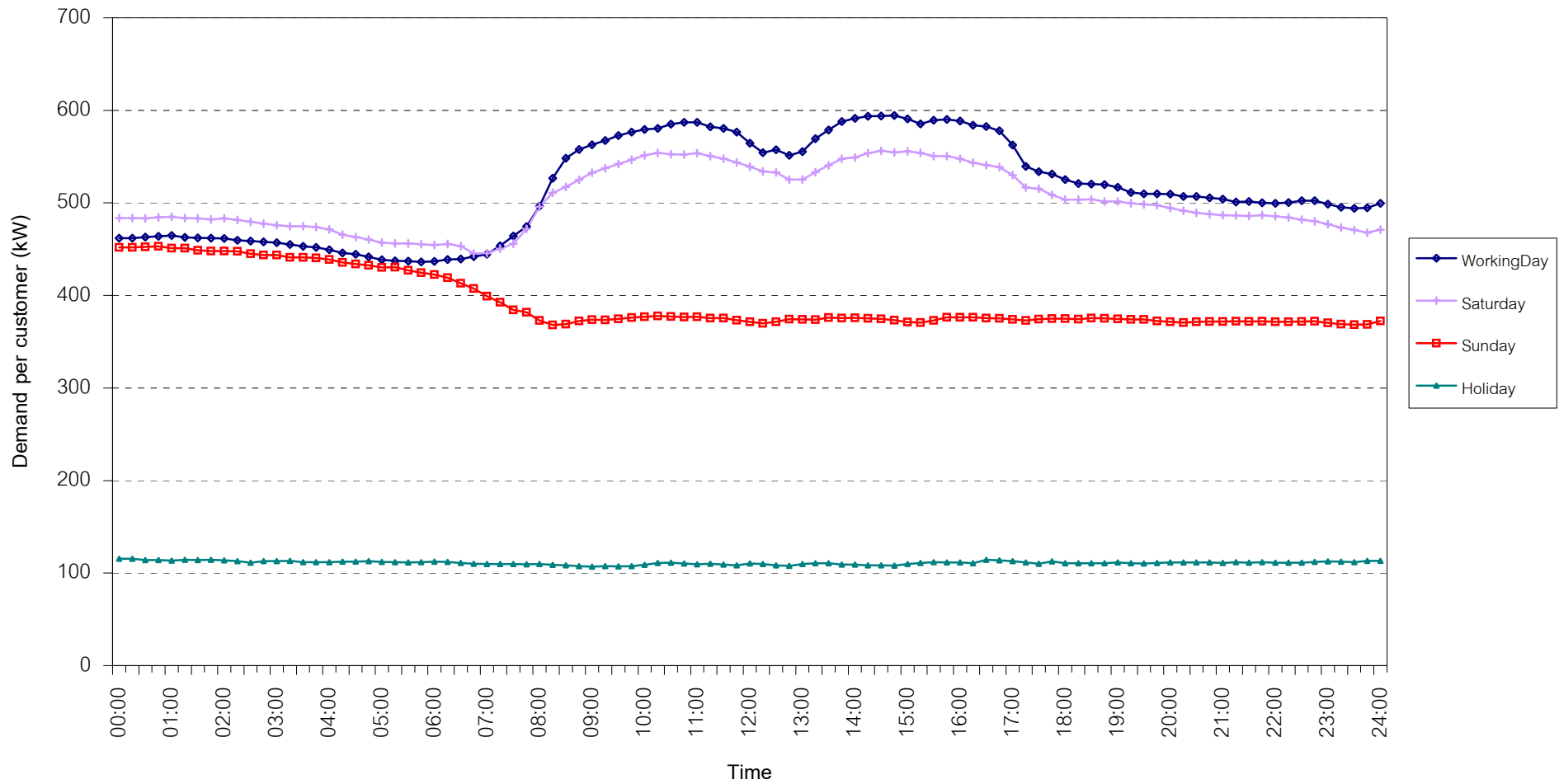
กราฟรูปที่ 9



## TSIC 32 (Textiles) Load Profile

Date: 1 Jan, 2009 to 31 Jan, 2009

Number of sample customers = 63



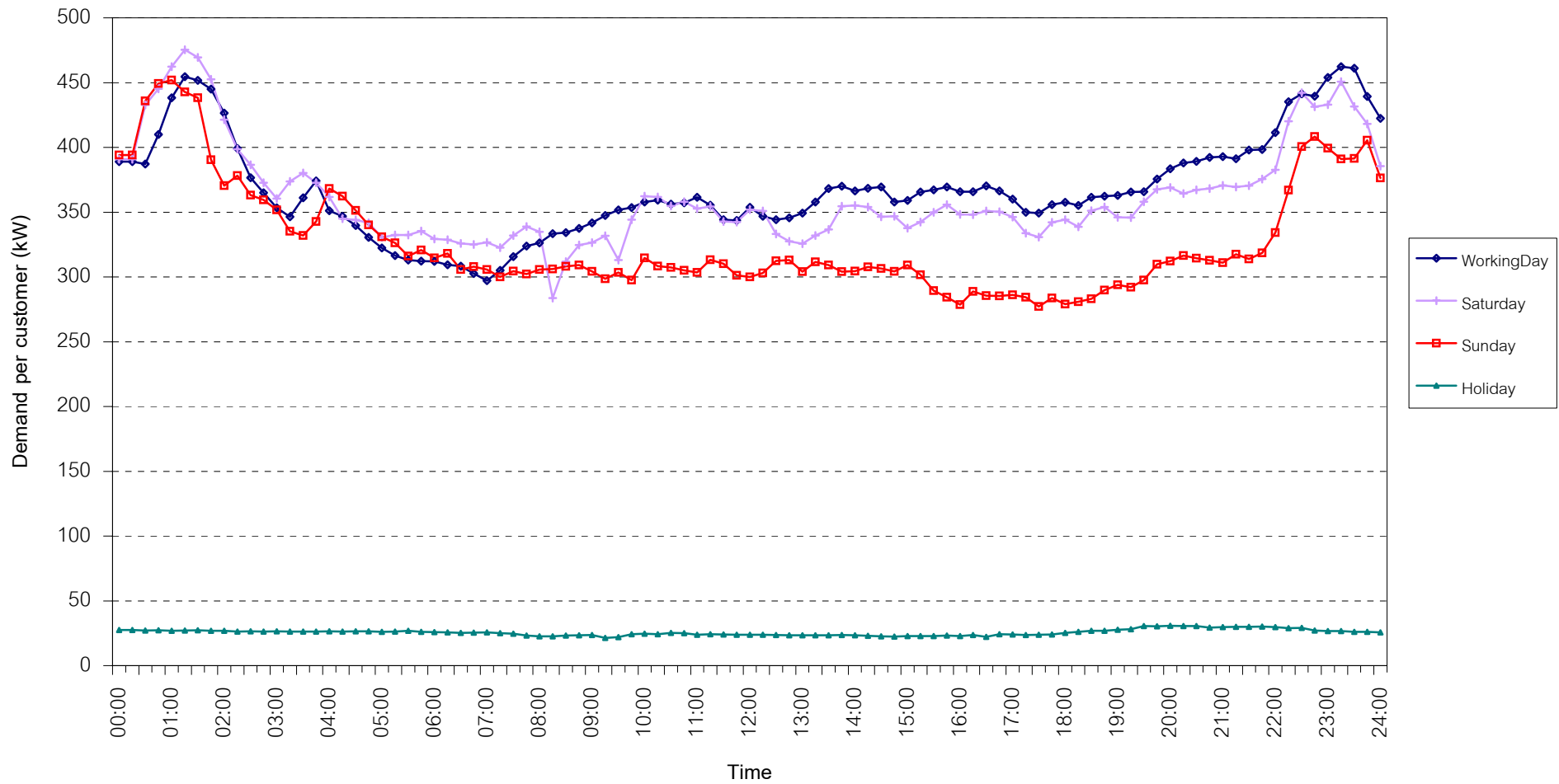
กราฟรูปที่ 10



## TSIC 34 (Paper & Printing) Load Profile

Date: 1 Jan, 2009 to 31 Jan, 2009

Number of sample customers = 10



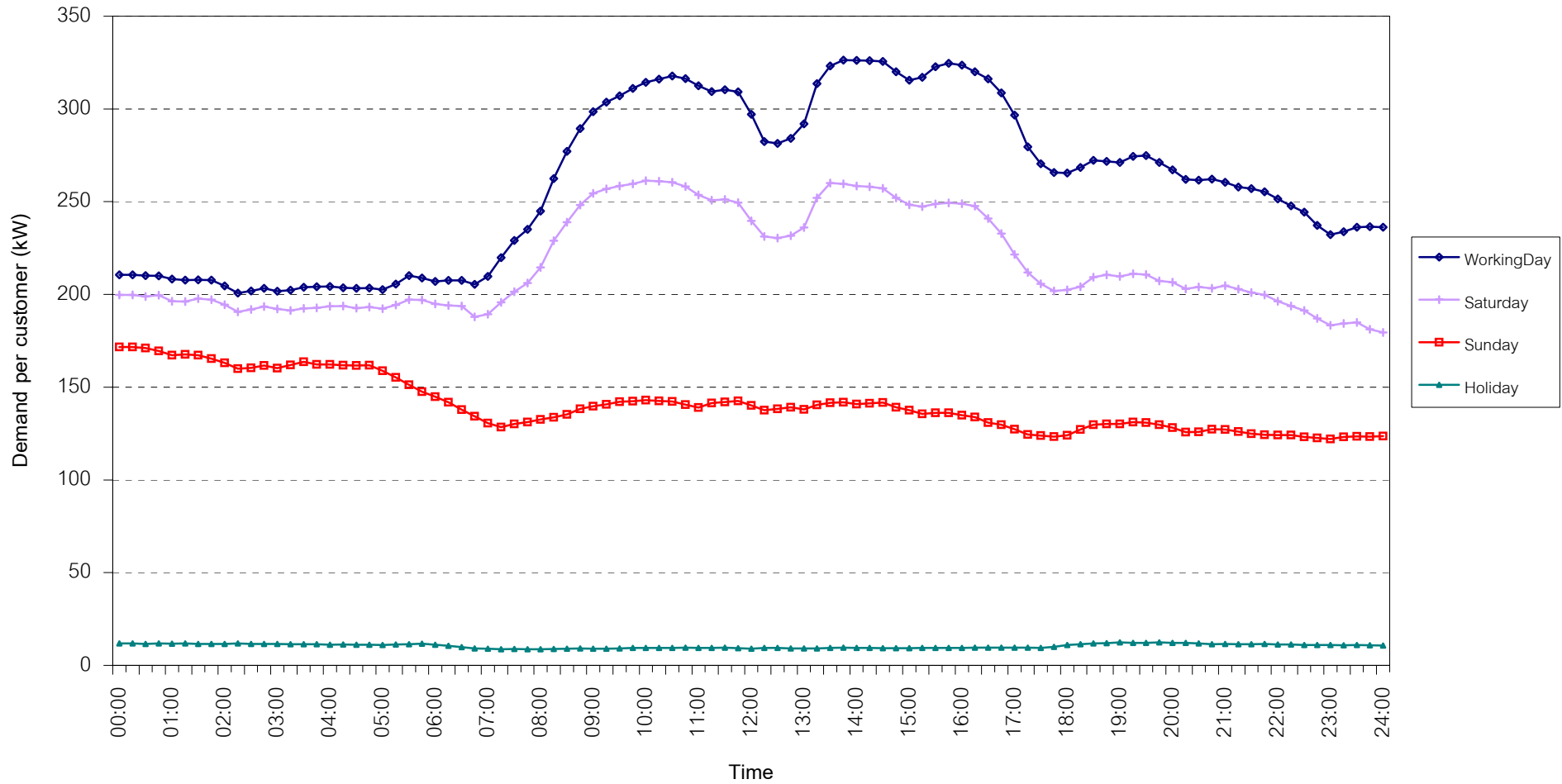
กราฟรูปที่ 11



## TSIC 35 (Chemical & Petroleum) Load Profile

Date: 1 Jan, 2009 to 31 Jan, 2009

Number of sample customers = 62



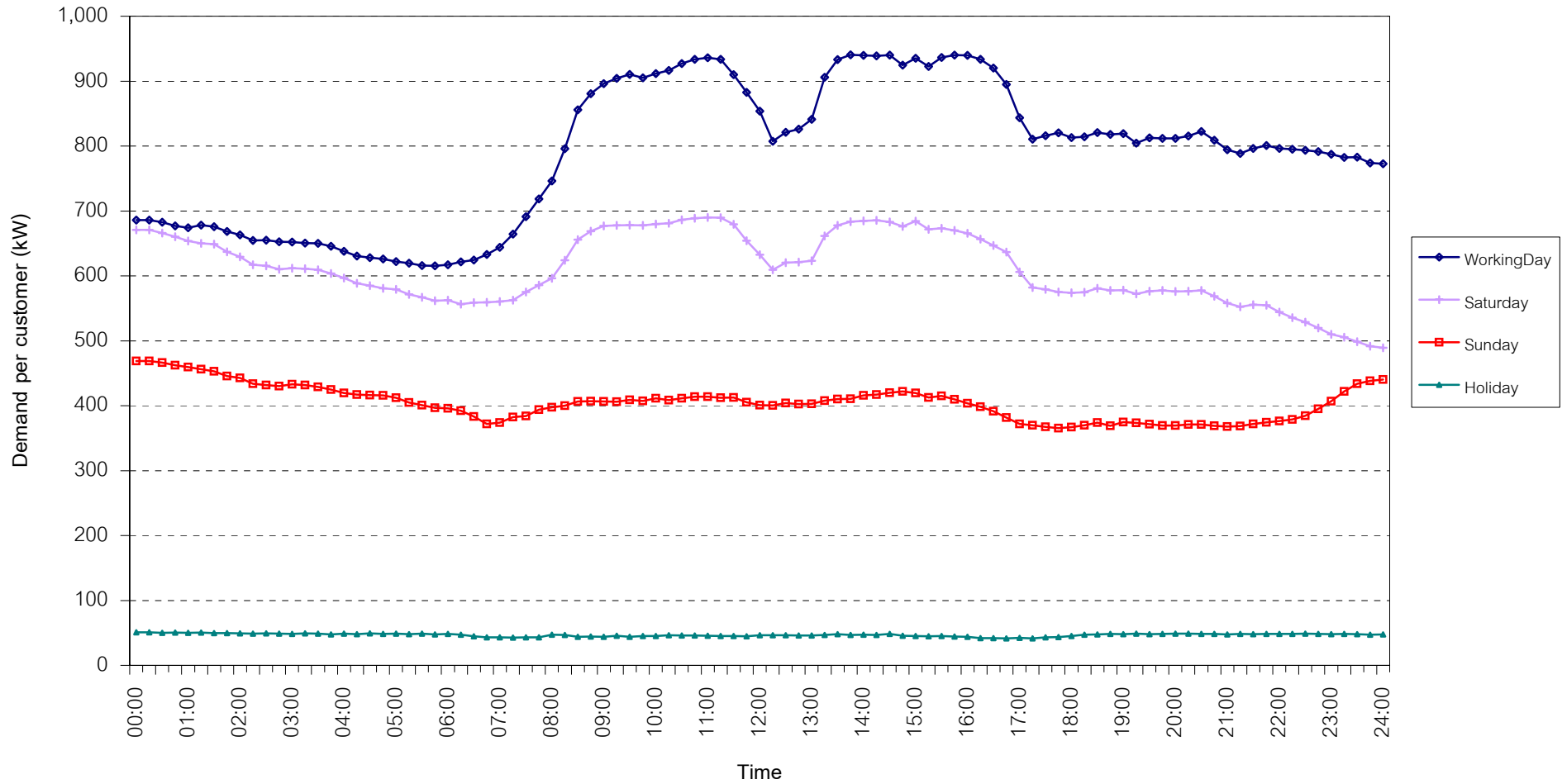
กราฟรูปที่ 12



## TSIC 38 (Fabricated Metal Products) Load Profile

Date: 1 Jan, 2009 to 31 Jan, 2009

Number of sample customers = 61



กราฟรูปที่ 13

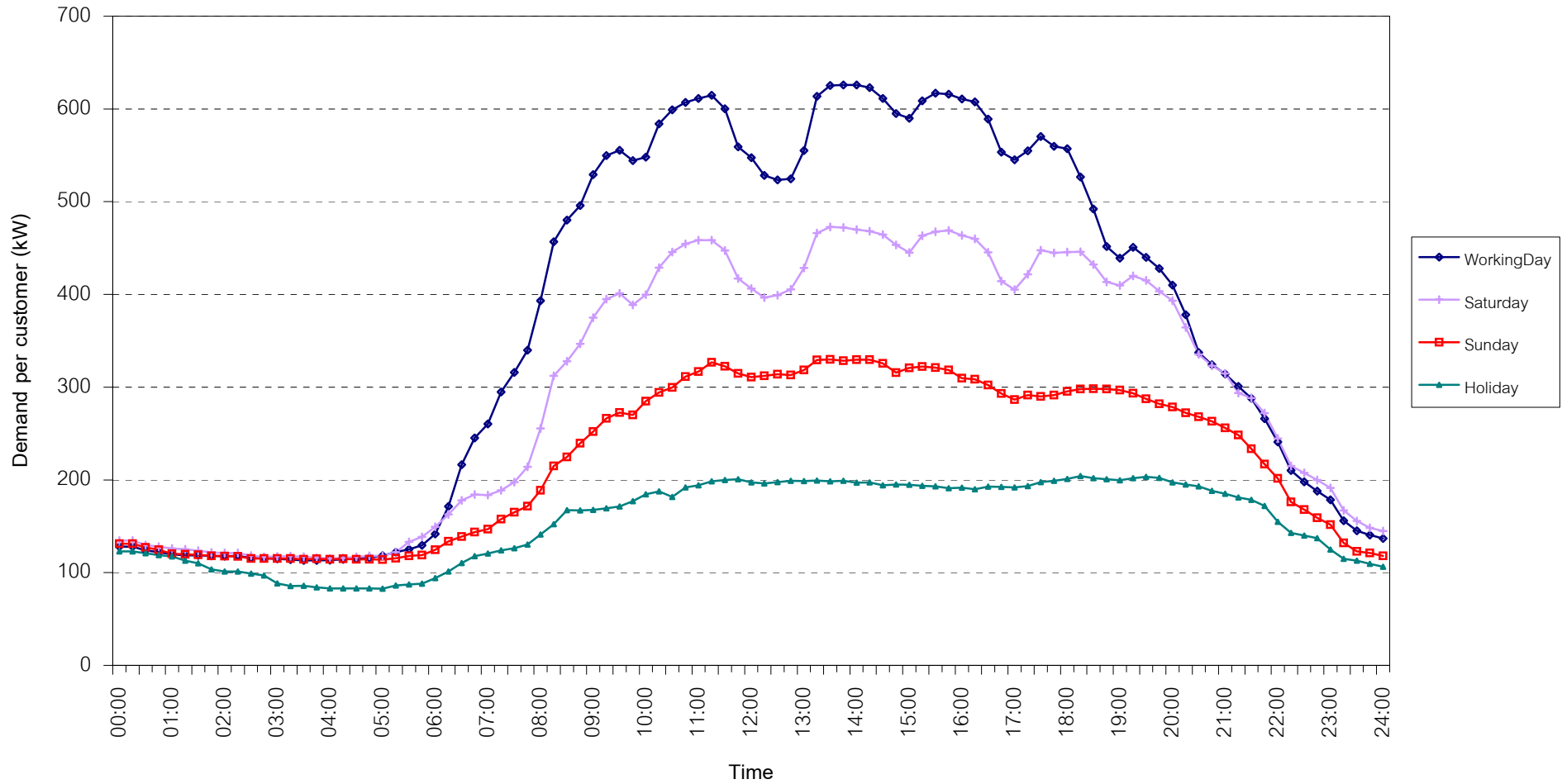




## TSIC 61 (Wholesale Trade) Load Profile

Date: 1 Jan, 2009 to 31 Jan, 2009

Number of sample customers = 8



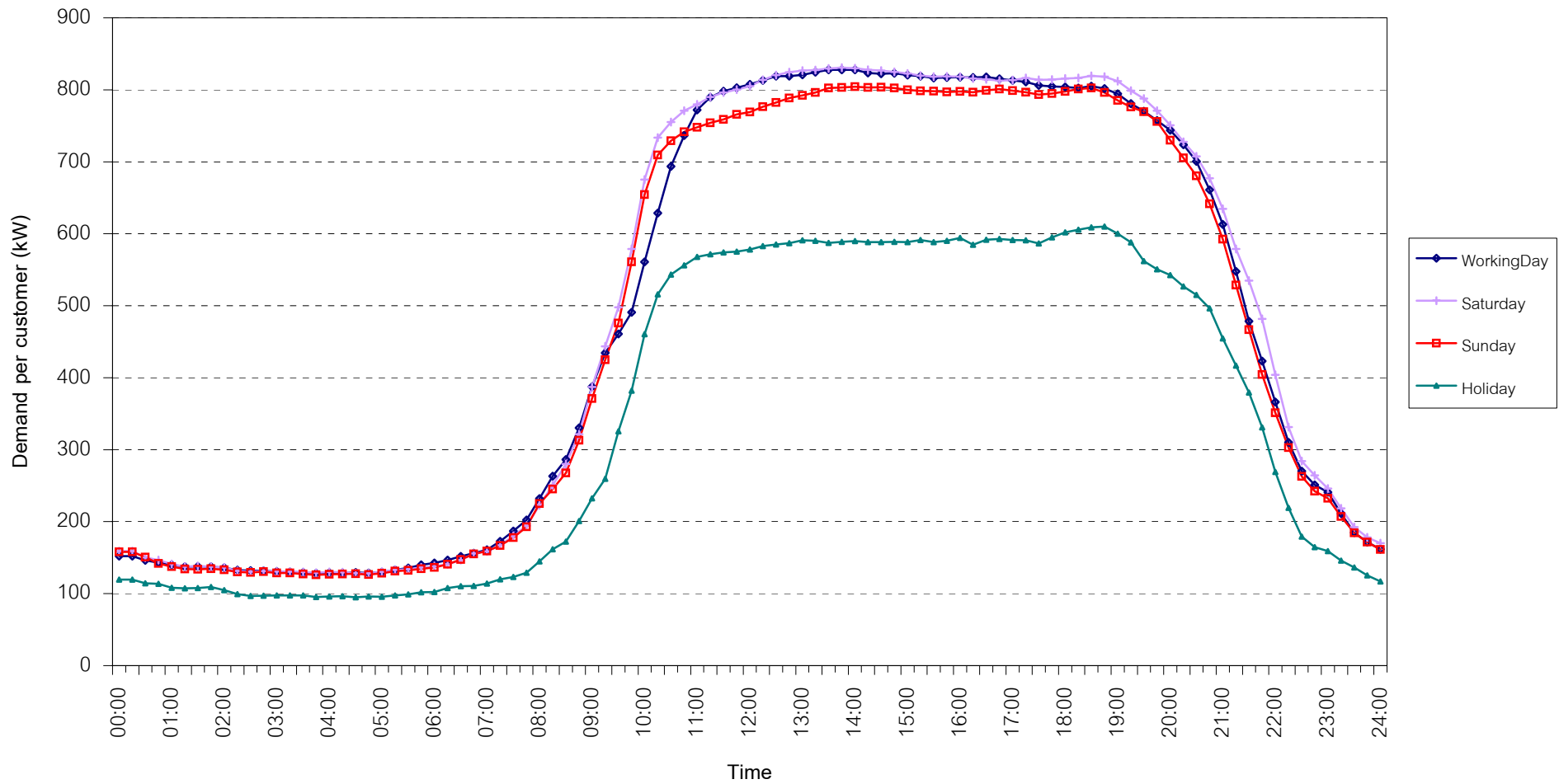
กราฟรูปที่ 14



## TSIC 62 (Retail Trade) Load Profile

Date: 1 Jan, 2009 to 31 Jan, 2009

Number of sample customers = 73



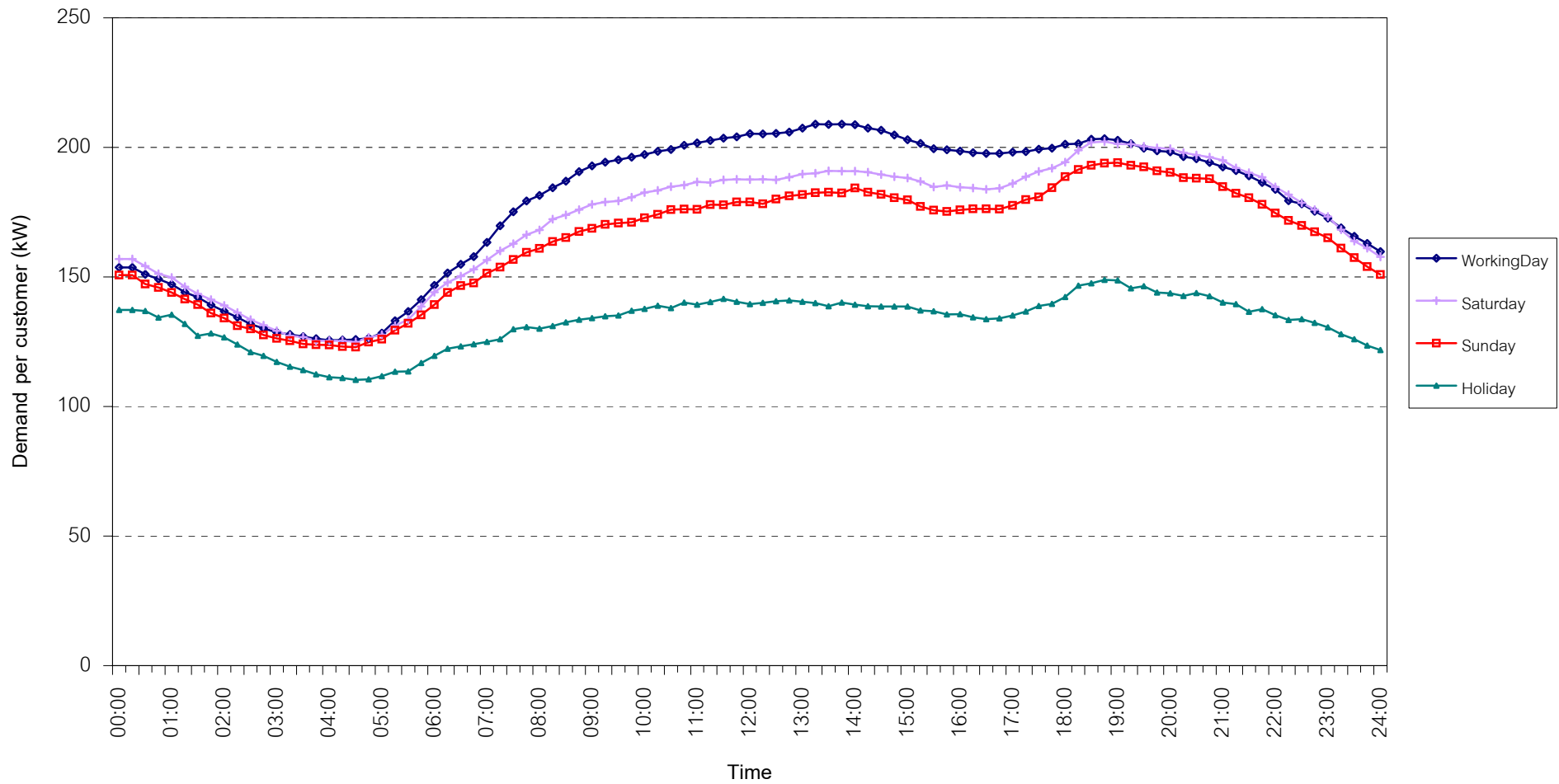
กราฟรูปที่ 15



## TSIC 63 (Hotels and restaurants) Load Profile

Date: 1 Jan, 2009 to 31 Jan, 2009

Number of sample customers = 82



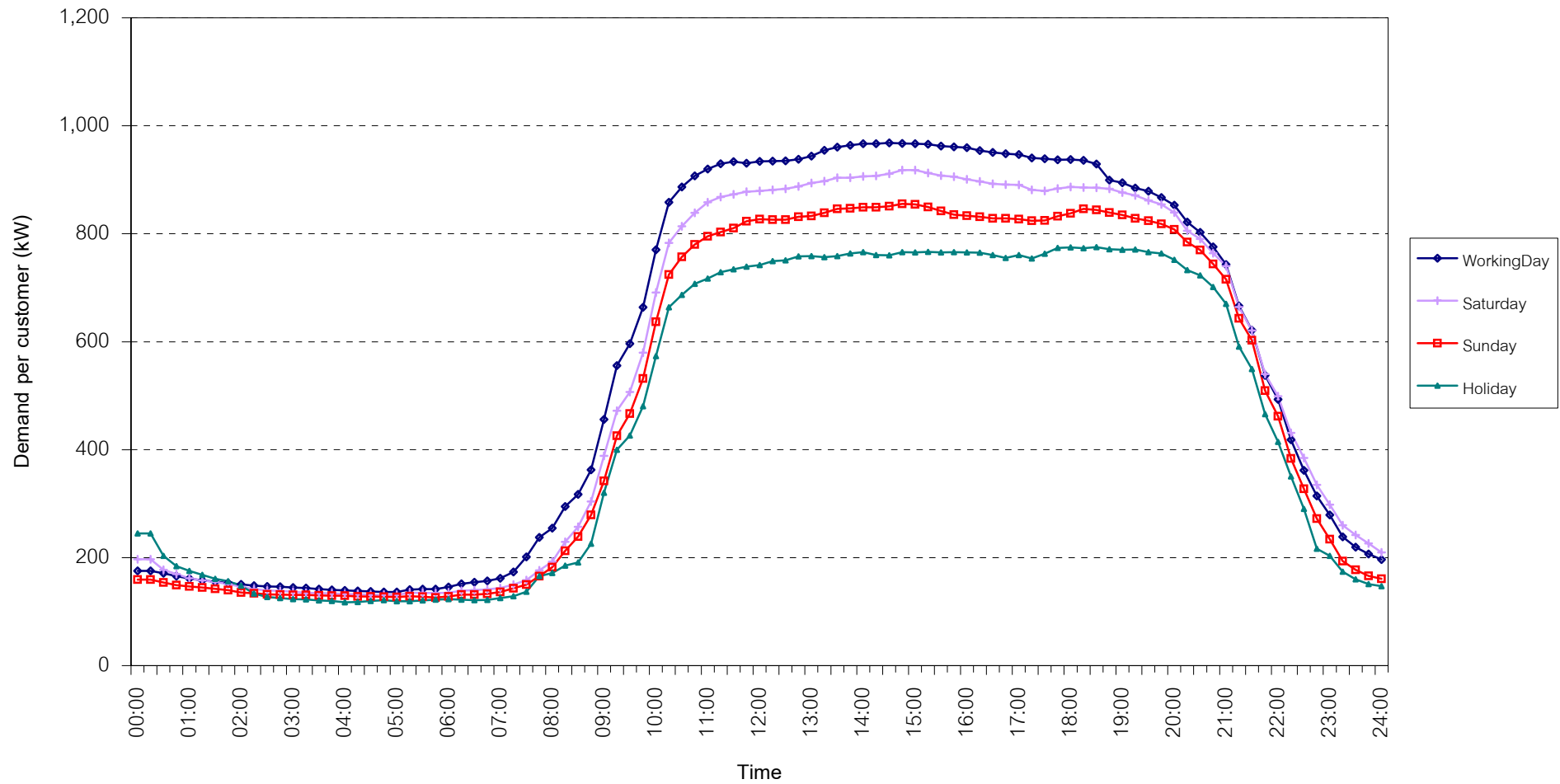
กราฟรูปที่ 16



TSIC 83 (Real Estate) Load Profile

Date: 1 Jan, 2009 to 31 Jan, 2009

Number of sample customers = 33



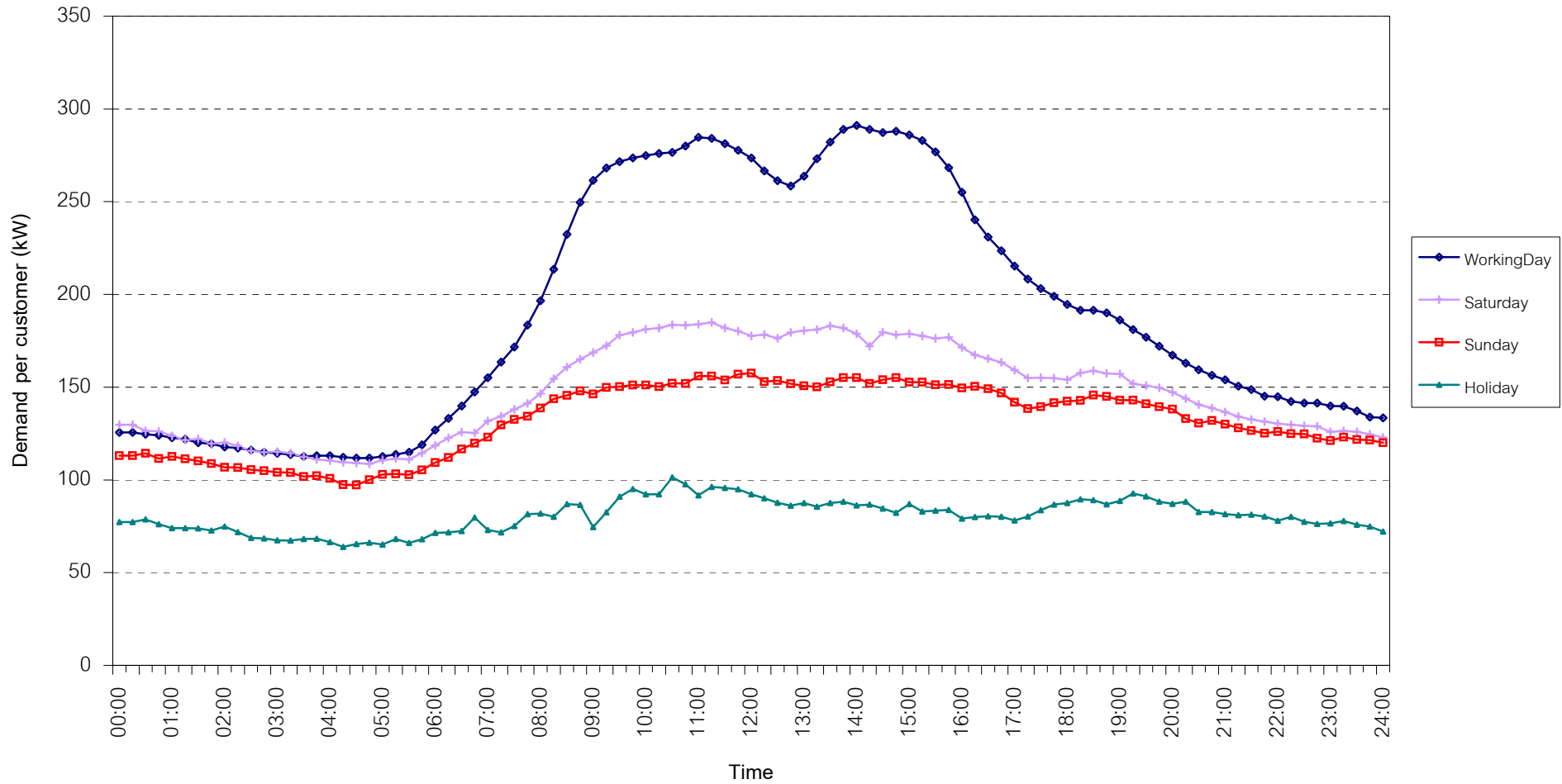
กราฟรูปที่ 17



## TSIC 93 (Social Services) Load Profile

Date: 1 Jan, 2009 to 31 Jan, 2009

Number of sample customers = 21

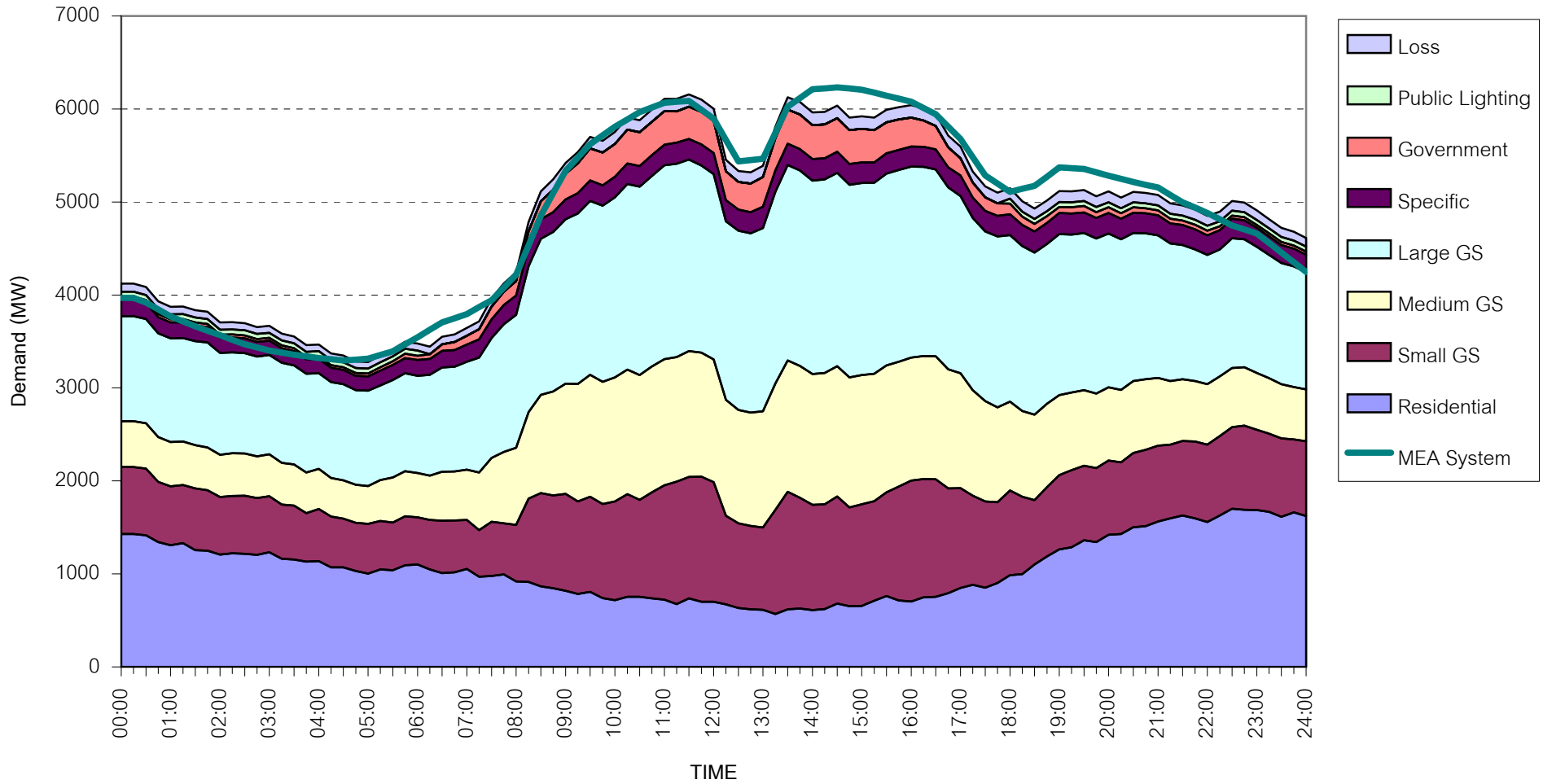


กราฟรูปที่ 18



## MEA's System Load Profile

Peak Day 29 January, 2009 at 14:30



กราฟรูปที่ 19